



Chemical Substances and Biological Agents

# Studies and Research Projects



REPORT R-777



## Characterization and Control of Occupational Exposure to Nanoparticles and Ultrafine Particles

*Maximilien Debia  
Charles Beaudry  
Scott Weichenthal  
Robert Tardif  
André Dufresne*





Established in Québec since 1980, the Institut de recherche Robert-Sauvé en santé et en sécurité du travail (IRSST) is a scientific research organization known for the quality of its work and the expertise of its personnel.

## OUR RESEARCH is *working* for you !

### Mission

To contribute, through research, to the prevention of industrial accidents and occupational diseases, and to the rehabilitation of affected workers;

To disseminate knowledge and serve as a scientific reference centre and expert;

To provide the laboratory services and expertise required to support the public occupational health and safety prevention network.

*Funded by the Commission de la santé et de la sécurité du travail, the IRSST has a board of directors made up of an equal number of employer and worker representatives.*

### To find out more

Visit our Web site for complete up-to-date information about the IRSST. All our publications can be downloaded at no charge.

**[www.irsst.qc.ca](http://www.irsst.qc.ca)**

To obtain the latest information on the research carried out or funded by the IRSST, subscribe to Prévention au travail, the free magazine published jointly by the IRSST and the CSST.

**Subscription:** [www.csst.qc.ca/AbonnementPAT](http://www.csst.qc.ca/AbonnementPAT)

### Legal Deposit

Bibliothèque et Archives nationales du Québec  
2013

ISBN: 978-2-89631-670-0 (PDF)

ISSN: 0820-8395

IRSST – Communications and Knowledge

Transfer Division

505 De Maisonneuve Blvd. West

Montréal, Québec

H3A 3C2

Phone: 514 288-1551

Fax: 514 288-7636

[publications@irsst.qc.ca](mailto:publications@irsst.qc.ca)

[www.irsst.qc.ca](http://www.irsst.qc.ca)

© Institut de recherche Robert-Sauvé  
en santé et en sécurité du travail,

May 2013



Chemical Substances and Biological Agents

# Studies and Research Projects



REPORT R-777

## Characterization and Control of Occupational Exposure to Nanoparticles and Ultrafine Particles

### Disclaimer

The IRSST makes no guarantee as to the accuracy, reliability or completeness of the information contained in this document. Under no circumstances shall the IRSST be held liable for any physical or psychological injury or material damage resulting from the use of this information.

It should further be noted that the content of the document is protected by Canadian intellectual property legislation.

*Maximilien Debia, Charles Beaudry, Scott Weichenthal,  
Robert Tardif, André Dufresne*

*Université de Montréal*

Clic Research  
[www.irsst.qc.ca](http://www.irsst.qc.ca)



This publication is available free  
of charge on the Web site.

This study was funded in the framework of an agreement between the IRSST and NanoQuébec.

The conclusions and recommendations are those of the authors.

This publication has been translated; only the original version (R-746) is authoritative.

**IN CONFORMITY WITH THE IRSST'S POLICIES**

The results of the research work published  
in this document have been peer-reviewed.

## **ACKNOWLEDGMENTS**

We wish to thank all the people who assisted us in this project and who enabled us to achieve the measures presented in this report. By doing this, they have contributed to improving the prevention of occupational risks. In particular, we thank Claude Ostiguy of the Institut de recherche Robert-Sauvé en santé et en sécurité du travail (IRSST) for his role in the project and Gilles L'Espérance's team at the Centre de Caractérisation Microscopique des Matériaux, (CM)<sup>2</sup>, for the microscopic analyses.

We also express our great appreciation to this project's two funding agencies, the IRSST and NanoQuébec.



## ABSTRACT

Many workers are exposed to a range of particles present on a nanometric scale. In occupational hygiene, it is common to differentiate manufactured nanoparticles (NP) from ultrafine particles (UFP) coming from natural, human or industrial sources. Given that major deficiencies exist in the usual risk assessment approaches for these particles, the objective of this research was to assess occupational UFP and NP exposures. The secondary objective was comprehensive testing of the assessment capabilities regarding occupational NP and UFP exposures in an industrial and laboratory context. Two main types of assessment were performed during this research. The first concerns the assessment of the fine and ultrafine particle concentrations with a particle counter (P-Trak, model 8525), and the second pertains to the assessment of fine and ultrafine particle size distribution with an electrical low pressure impactor (ELPI). The measurements were taken in two welding schools, an aluminium smelter, the research centre of a thermoplastics processing company, and three university laboratories producing and/or using nanoparticles.

The results revealed that aluminium smelter workers, people who perform welding tasks, and workers in the thermoplastic processing industry are exposed to UFPs. However, the assessments performed under this study do not reveal high NP concentrations in research laboratories. Only NP production by milling generated detectable NP concentrations. NP handling in glove boxes of two other laboratories seems to prevent worker exposure adequately.

There is currently no consensus concerning UFP and NP exposure evaluation measures. However, our findings suggest that the P-Trak is suitable for occupational assessment of UFP concentrations, whereas several uncertainties remain to assess NP exposure, particularly in their agglomerated form. In view of this research, it appears that a characterization and control study of occupational NP and UFP exposure should include assessment of the mass and particle number concentrations, measurement of granulometric distribution and electron microscopic characterization of nanoscale particles.





## TABLE OF CONTENTS

<b>ACKNOWLEDGMENTS .....</b>	<b>I</b>
<b>ABSTRACT .....</b>	<b>III</b>
<b>TABLE OF CONTENTS.....</b>	<b>V</b>
<b>LIST OF TABLES .....</b>	<b>VII</b>
<b>LIST OF FIGURES.....</b>	<b>IX</b>
<b>LIST OF ACRONYMS.....</b>	<b>XI</b>
<b>1. ORIGIN AND CONTEXT OF THE STUDY .....</b>	<b>1</b>
<b>2. STATE OF KNOWLEDGE OF THE PROBLEM OF OCCUPATIONAL EXPOSURE TO ULTRAFINE PARTICLES AND NANOPARTICLES .....</b>	<b>3</b>
2.1.1 Effects on Health and Safety.....	3
2.1.2 Metrology.....	3
2.1.3 Nanoparticle Exposure.....	4
2.1.4 Ultrafine Particle Exposure.....	5
2.1.5 Means of Controlling Exposure.....	5
2.1.6 Risk Management .....	6
2.1.7 Regulation, Programs, Standardization and Guides .....	6
<b>3. OBJECTIVE OF THE STUDY.....</b>	<b>8</b>
<b>4. METHODOLOGY .....</b>	<b>9</b>
4.1 Metrology and Assessment Strategies .....	9
4.2 Study Environments.....	10
4.2.1 Welding Schools .....	10
4.2.2 Aluminium Smelter.....	11
4.2.3 Thermoplastic Processing Industry.....	11
4.2.4 University Laboratories Producing or Using Nanoparticles.....	12
<b>5. RESULTS .....</b>	<b>15</b>
5.1 Welding Schools.....	15
5.1.1 School A.....	15
5.1.2 School B.....	18
5.2 Aluminium Smelter.....	19
5.3 Thermoplastic Processing Industry.....	25
5.4 University Laboratories Producing or Using Nanoparticles.....	28

---

5.4.1	Laboratory A.....	28
5.4.2	Laboratory B.....	29
5.4.3	Laboratory C.....	30
<b>6.</b>	<b>DISCUSSION.....</b>	<b>33</b>
6.1	Welding Schools.....	33
6.2	Aluminium Smelter.....	34
6.3	Thermoplastic Processing Industry.....	35
6.4	University Laboratories Producing or Using Nanoparticles.....	36
6.4.1	Laboratory A.....	36
6.4.2	Laboratory B.....	36
6.4.3	Laboratory C.....	37
<b>7.</b>	<b>GENERAL CONSIDERATIONS AND RECOMMENDATIONS.....</b>	<b>39</b>
7.1	Occupational Exposures.....	39
7.2	Exposure Assessment Tools.....	39
<b>8.</b>	<b>BIBLIOGRAPHY.....</b>	<b>41</b>

## LIST OF TABLES

Table 1 – Cutpoint diameters ( $\mu\text{m}$ ) for each ELPI stage, depending on the configuration used...	9
Table 2 – Study environments .....	10
Table 3 – Mean concentrations (particles/cm <sup>3</sup> ) measured in the two welding schools .....	15
Table 4 – Descriptive statistics of the particle concentrations (particles/cm <sup>3</sup> ) measured with P-Trak particle counters during mapping of the Soderberg and prebaked anode processes and in the anode cooling rooms .....	20
Table 5 – Descriptive statistics of particle concentrations (particles/cm <sup>3</sup> ) measured with P-Trak particle counters during quasi-personal measurements in i) the Soderberg process and ii) the prebaked anode process .....	20
Table 6 - Proportions of particles in the ELPI stages (sampling without filter stage) for the Soderberg and prebaked anode processes.....	22
Table 7 – Main ultrafine elements detected during TEM/EDS analyses in the two electrolysis processes .....	23
Table 8 – Mean particle levels in the storage and processing rooms.....	26



## LIST OF FIGURES

Figure 1 – Mean concentrations and typical errors measured with the P-Trak particle counters for the welding processes of Schools A and B (school indicated in parentheses).....	16
Figure 2 – Profile of concentrations recorded during one day of sampling for the SMAW process of Welding School A .....	16
Figure 3 - Profile of concentrations recorded during one day of sampling for the GMAW on aluminium process of Welding School A .....	17
Figure 4 - Profile of concentrations recorded during 30 minutes of sampling for the SMAW process of Welding School A .....	17
Figure 5 – Particle size distribution for the welding processes of School A .....	18
Figure 6 – Profile of concentrations recorded during one day of sampling for the SMAW process of Welding School B.....	18
Figure 7 – Particle concentrations in the Soderberg and prebaked anode processes.....	19
Figure 8 - Comparison of particle granulometric distributions based on opening of the potroom doors in the prebaked anode process .....	22
Figure 9 - Comparison of particle granulometric distributions based on the temperature of the anodes in the cooling rooms .....	23
Figure 10 – Prebaked anode process sample from the ELPI 28 nm stage.....	24
Figure 11 –Soderberg process sample from the ELPI 28 nm stage.....	24
Figure 12 – Prebaked anode process sample from the ELPI 93 nm stage.....	24
Figure 13 - Soderberg process sample from the ELPI 156 nm stage.....	25
Figure 14 – Prebaked anode process sample from the ELPI 156 nm stage.....	25
Figure 15 – Profile of particle concentrations measured in the research centre’s different rooms .....	26
Figure 16 – Particle concentrations measured in the processing room.....	27
Figure 17 – Quasi-personal particle concentrations measured during CNT handling and extruder startup.....	27
Figure 18 – Particle concentrations in the aluminium/copper nanoparticle production laboratory (Laboratory A) .....	28
Figure 19 – Profiles of particle concentrations measured with P-Trak particle counters on the 3 <sup>rd</sup> day of sampling near the mill (i) and 3 metres from the mill (ii) (Laboratory A).....	29
Figure 20 – Particle concentrations measured 1 metre from the glove box during CNT handling in Laboratory B.....	30

Figure 21 – Particle concentrations measured 3 metres from the glove box during CNT handling in Laboratory B.....	30
Figure 22 – Particle concentrations measured in the glove box during CNT handling in Laboratory C.....	31
Figure 23 – Aerosol concentrations measured in the glove box during CNT handling in Laboratory C.....	31
Figure 24 – Particle concentrations measured under the laboratory hood during polymer handling in Laboratory C.....	32
Figure 25 – Aerosol concentrations measured under the laboratory hood during polymer handling in Laboratory C.....	32

## LIST OF ACRONYMS

CPC: Condensation Particle Counters

EEPS: Engine Exhaust Particle Sizer

ELPI: Electrical Low Pressure Impactor

FCAW: Flux Cored Arc Welding

FMPS: Fast Mobility Particle Sizer

GM: geometric mean

GMAW: Gas Metal Arc Welding

GSD: geometric standard deviation

GTAW: Gas Tungsten Arc Welding

NP: nanoparticles

NT: nanotechnologies

CNT: carbon nanotubes

SMAW: Shielded Metal Arc Welding

SMPS: Scanning Mobility Particle Sizer

TEM-EDS: Transmission Electron Microscopy coupled with Energy-Dispersive Spectrometry

UFP: ultrafine particles





## 1.ORIGIN AND CONTEXT OF THE STUDY

It is now recognized that workers are exposed to a whole range of particles present on a nanometric scale. Nanometric scale is defined as a size ranging from 1 to 100 nanometres (nm). In occupational health, it is common to differentiate manufactured nanoparticles (NP) from ultrafine particles (UFP), which originate from “natural, human or industrial sources, such as part of the smoke or fumes generated by forest fires, cigarettes, internal combustion engines or welding operations” [1]. NPs thus are produced for an industrial purpose, while UFPs are produced unintentionally during industrial activities. These are the definitions of NP and UFP used in this report.

Nanotechnologies (NT) are developing extremely rapidly. In 2008, the Agence française de sécurité sanitaire de l’environnement et du travail (AFSSET) (today called Agence nationale de sécurité sanitaire de l'alimentation, de l'environnement et du travail (ANSES)) identified several hundred mass market products containing nanomaterials: textiles, cosmetics, food, sporting goods, construction materials [2]. The IRSST also indicated, in 2008, that more than 650 products containing NPs were already commercially available [1]. In July 2011, the list published by the Woodrow Wilson Center for Scholars included 1317 commercially available products containing nanoparticles in its online inventory. A recent survey estimates that 21.2% of companies in the Swiss chemical industry use NPs; this percentage falls to 0.6% for the Swiss manufacturing industry as a whole [3]. Certain nanomaterials are also found in several construction products, particularly concrete, steel, ceramics, glass and paint [4]. According to Nano Québec, Québec’s strengths in the NT field are concentrated in four priority sectors: 1) micro/nanosystems, particularly including the processes (micro/nanomanufacturing, electronic assembly, encapsulation, etc.) and development of devices (thin layers, electromechanical microsystems, etc.); 2) processing of materials, particularly including synthesis of materials (nanomaterials, thin layers, synthesis processes (plasma, etc.) and their integration (composites, coatings, sensors, etc.); 3) forestry and clean technologies, particularly including green materials (nanocellulose, recyclable materials, etc.) and energy production or storage techniques (photovoltaic, LED, batteries, etc.); and 4) nano-biohealth, particularly including devices (biosensors, biocompatible materials, etc.) and projects for the development of knowledge or techniques in the health/safety field [5].

Given the increased use of NPs in industrial applications, more and more workers thus are likely to be exposed to NPs. In addition, several studies suggest the possibility of health risks specific to these particles. There are also parallel concerns regarding the conditions which could generate exposure to these NPs and the means required to measure and control these conditions. Thus, there was a 124% growth in environmental, health and safety publications concerning this subject between 2004 and 2007, while this growth rate was only 29% for the same period for nanotechnology as a whole [6]. Faced with these situations of uncertainty, the IRSST recommends a preventive and even a precautionary approach to avoid any NP exposure [1]. AFSSET also recommends acting without waiting in the name of the precautionary principle, particularly by encouraging research in the exposure assessment fields [2]. The National Institute for Occupational Safety and Health (NIOSH) identified 10 critical fields concerning nanotechnology research. Among these fields, research on measurement methods and exposure

assessment strategies are necessary to improve occupational risk prevention [7]. These concerns also led the creation of numerous working groups, concerned about ensuring the safety of potentially exposed persons. Among these groups arising from national and supranational bodies, the United Kingdom Health and Safety Executive (HSE) [8], the Nordic Council of Ministers (NORDEN) [9] and the European Agency for Safety and Health at Work (EU-OSHA) [10]. Finally, in Québec, significant deficiencies remain regarding the exposure assessment and support offered to nanotechnology businesses. The IRSST also indicated, in 2008, that no NP assessment had been performed in the work environment by its researchers [1].

A problem also emerges with UFPs. It has long been known that these particles are present in many work environments, but it is only in the past few years that epidemiological research has suggested that UFPs can contribute to cardiovascular and respiratory problems [11-16]. However, there is little documentation of the UFP exposure levels in the work environments, even though certain data has been published in the past few years, for example, regarding smelters [17-20], welding processes [21-24], grinding processes [25] and metal machining processes [26]. However, no inventory of occupational UFP exposure sources currently exists, nor any consensus on exposure assessment tools. A project called MatPuf was deployed in France in 2010 to identify occupational situations generating UFPs, with the aim of producing a job-UFP exposure matrix. As in the case of NPs, there is a need for better understanding and better characterization of occupational UFP exposure.

## 2.STATE OF KNOWLEDGE OF THE PROBLEM OF OCCUPATIONAL EXPOSURE TO ULTRAFINE PARTICLES AND NANOPARTICLES

The NORDEN [9], IR SST [1] and EU-OSHA [10] literature review synthesis, produced in 2007, 2008 and 2009 respectively, served as a basis for the points presented in this section. For the purposes of this section, when it is desirable to group NPs and UFPs together, we refer to them as nanomaterials (NM).

### 2.1.1 *Effects on Health and Safety*

Several studies suggest cardiovascular and respiratory health effects for environmental and/or occupational UFP exposures [11, 14, 27, 28]. In addition, several synthesis documents have been published concerning the effects of nanoparticles. All the information in this section thus is derived from the documents by Kaluza et al. [10] and Ostiguy et al. [29]. Although there is still a debate on the mechanisms, “in animals, several effects have already been shown, including toxic effects on several organs (heart, lungs, kidneys, reproductive system...), as well as genotoxicity and cytotoxicity” [29]. Short-term animal studies are said to have shown reactions of inflammation, cytotoxicity and lung tissue damage. Distribution to other organs via the blood system or the brain directly via the nose is considered possible, but requires verification by other studies. Although cutaneous sensitization has already been observed, an intact skin seems sufficient to prevent any NM penetration into the body by this route. No human study to date has shown nanomaterials to have carcinogenic effects. While the current in vitro toxicity assessment methods need better validation before they are used in the case of nanomaterials, all in vivo methods would be applicable to the study of nanomaterials, with certain modifications, such as a detailed characterization of the particles.

The main NM-related safety risks are fire-explosion and the catalytic effect. The relative intensity of a fire or an explosion in relation to fine particles of the same material is variable; in the case of aluminium, this relative intensity is lower, due to the surface oxide layer, while it is similar for carbon black and carbon nanotubes (CNT). The increase in the specific surface of nanomaterials favours the catalytic effect and could lead to unexpected violent reactions.

### 2.1.2 *Metrology*

The “best practices guide favouring management of the risks related to synthetic nanoparticles” by Ostiguy et al. [1] serves as the reference for this section. In this document, the authors indicate that it is important to “characterize NP emissions and assess, as a minimum, the particle number concentration, granulometric distribution, specific surface and chemical composition”. The authors of the report thus indicate that “no instrument at the present time can produce a specific analysis of NPs to determine all the relevant characteristics of exposure to synthesized NPs.” A table showing examples of instruments and techniques allowing characterization of aerosol NPs is presented in the best practice guide. Condensation Particle Counters (CPC) particularly allow determination of the particle number concentrations and real-time concentrations of fine and ultrafine particles, while the Electrical Low Pressure Impactor (ELPI)

and the Scanning Mobility Particle Sizer (SMPS) can determine a set of parameters, such as numerical, mass and specific surface granulometric distributions. However, it remains that many technical constraints do not allow efficient measurement of all these parameters [1]. Other spectrometers are also available, notably the Fast Mobility Particle Sizer (FMPS), the Engine Exhaust Particle Sizer (EEPS) and the Universal NanoParticle Analyzer (UNPA) [30, 31]. These instruments, which are still being assessed [32-36] continue to be bulky, expensive instruments, difficult to use in a worker's respiratory zone. A recent review of the various instrument types is presented by Kuhlbusch et al. [37]. In the past few years, some miniaturized instruments, which can be placed in respiratory zone, have emerged for NM assessment, including the UNC passive dosimeter, perfected at the University of North Carolina at Chapel Hill [38], the Aerasense – Phillips NanoTracer® [35, 39, 40], the DiSCmini® Diffusion Size Classifier [35, 41, 42] and a thermal precipitator [43].

In addition to the NM concentration assessment, some studies seek to characterize the nature of the particles involved and the chemical and physical processes of their formation. Several studies thus have attempted to identify the chemical composition and morphology of UFPs in the manganese alloy fabrication industry [44], oil refineries [45] and stainless steel welding fumes [46]. Some have also addressed the mechanisms producing UFPs during abrasion [47, 48] and during laser ablation of paint films [49], while others have focused on the electrical discharge machining (EDM) die-sinking process [50] or the carbon nanotube industry [51-54]. Some authors present the need to establish NM generation potential by standardized tests [55, 56]. A last study analyzes the respective advantages of scanning electronic microscopy versus transmission electronic microscopy for NM characterization [57]. Finally, Hameri et al. [58] presented the main chemical and physical processes of NM formation and coagulation.

### **2.1.3 Nanoparticle Exposure**

Three recent literature reviews on NP occupational exposure include many publications on the subject. These reviews are by Kaluza et al. [10], published in 2009, Brouwer [59] published in 2010, and Kuhlbusch et al. [37], published in 2011. Workplace studies and simulations of laboratory working conditions are listed in the reviews. These studies cover a wide range of materials, including carbon black, various metal and metalloid oxides (titanium, silicon, zinc, aluminium, cerium, manganese, etc.), silver, aluminium, organic clay, fullerenes and nanotubes (single-walled and multiwalled) and carbon nanofibres. Following these three publications, several others have been added on carbon nanotubes and the composites that contain them [60-63], metal and metalloid oxides [64-70], silver and aluminium NPs [71], carbon black [69], nanocellulose [72] and gold and cadmium selenide quantum dots (boxes) [73]. Whether in workplace exposure assessments or laboratory simulations, Kuhlbusch et al. raise several deficiencies that make it difficult to compare the results of the various studies, mainly including: 1) the lack of a harmonized approach concerning the strategies and instrument methods, the parameters measured, the dimensional ranges used and the data analysis procedures, 2) the absence of indication of uncertainty and the instrumentation detection limits, and 3) the absence of precision regarding the contribution of other sources to the concentrations measured [37].

### **2.1.4 Ultrafine Particle Exposure**

The publication by Schneider et al. [9] is the only recent literature review listed on occupational UFP exposure. A summary of the different exposure levels associated with various activities, such as several types of soldering, machining and metal welding, some smelting activities, and even bread baking, are presented. Of greater interest to our research is the presentation of results of an assessment in an aluminium electrolysis plant or in welding processes. A preliminary study by the Oslo-based National Institute of Occupational Health clearly shows that several types of arc welding are major sources of UFP number concentration, reaching  $1.6 \cdot 10^6$  particles/cm<sup>3</sup> (measured with an SMPS). In the study by Thomassen et al. [19], fixed-station measurements also indicate high UFP number concentrations ( $3 \cdot 10^5$  particles/cm<sup>3</sup>) during anode changes.

Since Schneider's literature review in 2007, many other publications have been released on UFP exposure. Thus, we find articles concerning metal machining and grinding [17, 74-76], firefighting [27], smelters [17, 18, 74, 77], precious metal refining [78], thermal spraying [79], the atmosphere inside automobiles [80, 81] or buses [82-85], bus garage mechanics and supervisors [85], pressurized metal casting [86, 87], restaurant cooking [86, 87], a diesel engine laboratory [86], sanding plywood and medium-density fiberboard (MDF) [88], asphalt production and spreading [89], polytetrafluoroethylene (PTFE) clothing manufacturing [90], operation of electric motors [91], the work of highway tollbooth attendants [92], commercial buildings [59, 93] operation of laser printers [94, 95], and school environments [96-98]. More interesting for our research are the various publications concerning metal welding [17, 99-102], in which the UFP number concentrations during MIG (Metal Inert Gas) welding of steel or aluminium range from  $1.1 \cdot 10^4$  particles/cm<sup>3</sup> to  $7 \cdot 10^5$  particles/cm<sup>3</sup>, depending on the studies.

### **2.1.5 Means of Controlling Exposure**

Ostiguy et al. "recommend that the means of control used allows NP dispersion in the air and on work equipment to be circumscribed as much as possible, in order to avoid exposing workers" [1]. According to one experiment in a testing booth, the capture efficiency of a suction source system would not vary for NP sizes between 4 and 100 nm. In addition, a study by the NIOSH conducted with suction nozzles, such as those used in welding, indicates a 74% to 76% reduction of the NP mass concentration between 15 and 50 nm [10].

Tsai et al. [103] and Cena et al. [62] indicate that handling of aluminium NPs, silver NPs or carbon nanotubes (CNT) under a hood can lead to high NP exposures. The turbulence created by the person's body in front of the hood would be at the origin of this exposure during the use of conventional hoods. Air curtain hoods would significantly reduce this type of exposure [71]. A suction nose used to clean tanks for a pilot project fabricating NPs of various metals (iron, copper, zinc, etc.) proved efficient in reducing exposure by 76% to 100% in the operator's respiratory zone [67].

The use of N95 and P100 filtering face pieces is very widespread in the NP industry. All the commercially available models are "Electret" models, in which the electrostatic effect is adding to the filtering mechanisms, such as diffusion, recognized as the most important mechanism for

nanosized particles. With these types of respiratory protective devices (RPD), the tests indicate that the particles penetrating the filtering materials more easily range in size between 30 and 70 nm [1]. However, the possibility that particles smaller than 10 nm also have high penetration due to the thermal rebound phenomena still has to be elucidated [104-106]. The need for better characterization of the penetration mechanisms and the leakage effects at the RPD contact points with the skin is recognized by several researchers [106-109].

The information concerning the efficiency of conventional skin protection for nanomaterials is much rarer. The use of protective equipment (suits and gloves) made of synthetic fibres is to be preferred, even if their efficiency is not yet proved for NPs [106].

### **2.1.6 Risk Management**

Several NP risk analysis and management guides have been published in the past few years but, on the whole, these documents arrive at similar treatment as for fine particles or toxic materials in general [1, 10, 108, 110-112]. Control banding methods are proposed by several authors [10, 113-115], while an information gathering model, which should accompany every NP exposure measurement, is presented by Woskie et al. [116]. An analysis of the NP Material Safety Data Sheets (MSDS) seems to indicate that information varies greatly from one manufacturer to another and that, in general, the information found in these MSDS is similar to that of analogous materials (graphite for CNT or fine particles of the same molecule) [9]. More generally, based on the precautionary principle and the deliberations of the European NanoCap<sup>1</sup> project, van Broekhuizen proposes a six-step risk management approach: 1) reporting of the quantity and type of NPs in the products, 2) creation of a national register of workers potentially exposed to nanomaterials, 3) transparency in communication of known and uncertain risks, 4) establishment of exposure limit values, 5) deployment of an early warning system for the first signs of occupational diseases, and 6) approval before marketing of any application of nanotechnologies and nanomaterials as a central element of a regulatory oversight policy [117]. A similar approach, but more specific to NP use in pesticide manufacturing, is presented by Stone et al. [118].

### **2.1.7 Regulation, Programs, Standardization and Guides**

To date, no government seems to have specific environmental health and occupational health regulations concerning NPs and UFPs. In Europe, the laws and regulations applicable to these particles are those associated with hazardous materials such as REACH, Seveso II and various environmental directives [10]. In the United States, in addition to the current scientific uncertainty regarding the properties of these particles, various administrative and legal constraints would prevent this government from establishing such regulations and laws in the near future [115, 119, 120]. There is the EPA's voluntary participation program, the Nanoscale Materials Stewardship Program [121], but in view of the participation rate and the confidentiality needs of the participating companies, there are strong doubts regarding its credibility [115, 122]. However, some European proposals exist for exposure limit values (ELV), one coming from the

---

<sup>1</sup> www.nanocap.eu

Organisation for Economic Cooperation and Development (OECD), two from Germany's Federal Institute for Occupational Safety and Health (BAuA), four from the Institute for Occupational Safety and Health of the German Social Accident Insurance (IFA), and four from the British Standards Institution (BSI) [113, 123, 124]; all these proposals are preliminary due to the incomplete nature of the available information. The NIOSH has also made preliminary proposals for carbon nanotubes and nanofibres [125] and titanium dioxide [126]. All these ELVs are mass concentration values except for two from the IFA for biopersistent granular materials [113].

While the U.S. Government's financial support for NP-associated health research is often considered insufficient [122, 127] by the American scientific community, the European Commission subsidizes many research programs, such as NANEX and NANODEVICE, under its 7<sup>th</sup> Framework Programme [10]. Other agencies, such as the World Health Organization (WHO) and the OECD are interested in the subject and offers their support to several initiatives [10]. OECD work [128], such as "Report of the Workshop on Risk Assessment of Manufactured Nanomaterials in a Regulatory Context" and "Preliminary Analysis of Exposure Measurement and Exposure Mitigation in Occupational Settings: Manufactured Nanomaterials" can be consulted on that body's website<sup>2</sup>.

The European Committee for Standardization (known as CEN), via its committees, CEN/TC137 and CEN/TC352, and the International Standards Organization (ISO), via its committees ISO/TC229 and ISO/TC146/SC 2, are working on the creation of standards concerning NPs. Currently, among those already published, two are related to exposure measurement [129, 130], while a third presents a risk analysis process [131], a fourth deals with safe work methods [132], and a fifth deals with terminology and definitions of nano-objects [133].

Among the European projects in progress that are more NP-specific, NANODEVICE is seeking to design and perfect portable, easy-to-use devices for NP measurement and characterization<sup>3</sup>, while NANEX intends to produce a list of exposure scenarios for manufactured nanomaterials, covering their life cycle and including work scenarios. A summary of NANEX's approach is presented in a series of documents called "Work Packages - (WP2-Development of Generic Exposure Scenario Descriptions, WP7-Scientific Integration and Gap Analysis et WP3-Occupational Exposure Scenarios)"<sup>4</sup>, and examples of work exposure scenarios are presented on the same website<sup>5</sup>.

---

2 [http://www.oecd.org/findDocument/0,3770,en\\_2649\\_37015404\\_1\\_119666\\_1\\_1\\_1,00.html](http://www.oecd.org/findDocument/0,3770,en_2649_37015404_1_119666_1_1_1,00.html)  
Consulted 2011-06-21

3 <http://www.nano-device.eu/> Consulted 2011-06-21

4 [http://www.nanex-project.eu/index.php/public-documents/cat\\_view/43-dissemination-reports/74-wps-reports](http://www.nanex-project.eu/index.php/public-documents/cat_view/43-dissemination-reports/74-wps-reports) Consulted 2011-06-21

5 <http://www.nanex-project.eu/index.php/exposure-scenarios-db> Consulted 2011-06-21

### **3.OBJECTIVE OF THE STUDY**

The main objective of this research was to assess occupational UFP exposures in welding schools and aluminium smelters. In addition, the research examined exposure levels among NP producers and users.

The secondary objective was to examine the overall capabilities for assessing occupational NP and UFP exposures in an industrial and laboratory context.



## 4.METHODOLOGY

### 4.1 Metrology and Assessment Strategies

Two main types of assessment were performed during this research: assessment of NM particle number concentrations and granulometric distributions.

The fine and ultrafine particle concentrations were assessed with particle counters (P-Trak, model 8525) made by TSI Inc. These are portable condensation particle counters for particles ranging from 20 nm to 1 µm in a concentration range of 0 to 500,000 particles/cm<sup>3</sup>. This instrument presents the advantage of providing real-time information and being easy to use and transportable.

The second assessment concerns fine and ultrafine particle size distribution with an Electrical Low Pressure Impactor (ELPI), made by the Finnish company Dekati Ltd. This low pressure impactor with real-time electrical detection allows analysis of aerosols in the 7 nm to 10 µm range. These limit sizes can vary according to the configuration used. The ELPI data is expressed in standardized concentrations dN/dlogDp. The ELPI also allows collection of the particles deposited in the impactor for microscopic characterization analysis. Three different configurations were used in this study. Table 1 presents the cutpoint diameters for each stage, according to the configurations 1) sampling with filter stage, 2) sampling without filter stage, and 3) collection. In particular, these real-time granulometric measurements will allow confirmation and assessment of the presence of nanomaterials in aerosols.

The P-Trak particle counters were supplied by the occupational hygiene laboratory of the Université de Montréal and the ELPI was supplied by the IRSST.

**Table 1 – Cutpoint diameters (µm) for each ELPI stage, depending on the configuration used**

<b>Configuratio n</b>	<b>Sampling with filter stage</b>	<b>Sampling without filter stage</b>	<b>Collection</b>
<b>Stage</b>	<b>µm</b>		
1	5.982	6.351	6.710
2	2.937	3.796	4.010
3	1.861	2.272	2.400
4	1.172	1.524	1.610
5	0.725	0.902	0.953
6	0.433	0.583	0.616
7	0.262	0.321	0.384
8	0.145	0.214	0.263
9	0.070	0.098	0.156
10	0.039	0.050	0.093
11	0.027	0.030	0.055
12	0.018	0.024	0.028

Different assessment strategies were used in this project, depending on certain requirements of the sampled environments and the measuring instruments. Fixed-station assessments and “quasi-personal” assessments thus were performed for both types of measurements. “Quasi-personal” measurements are defined in this report as measurements taken as close as possible to the workers’ breathing zone, by a technician or a hygienist.

## 4.2 Study Environments

Table 2 presents the list of study environments, the particle types assessed and the types of measurements taken.

**Table 2 – Study environments**

<b>Description</b>	<b>Particle type</b>	<b>Types of measurements</b>
Welding school A	UFP	Concentration/Distribution
Welding school B	UFP	Concentration
Aluminium smelter	UFP	Concentration/Distribution/TEM-EDS
Thermoplastic	UFP and CNT	Concentration
Laboratory A/NP production	Aluminium/copper NP	Concentration
Laboratory B/nanocomposites	CNT	Concentration
Laboratory C/nanocomposites	CNT	Concentration

UFP: ultrafine particles

NP: nanoparticles

CNT: carbon nanotubes TEM-EDS: Transmission Electron Microscopy coupled with Energy-Dispersive Spectrometry

### 4.2.1 Welding Schools

Exposure level assessments were performed in two welding schools in the Montréal region (Schools A and B). These assessments were spread over a 16-month period. For School A, particle size concentration and distribution assessments were performed for the following five processes: Shielded Metal Arc Welding (SMAW), Flux Cored Arc Welding (FCAW), Gas Metal Arc Welding (GMAW), Gas Tungsten Arc Welding (GTAW) and oxygen cutting. For School B, particle concentration assessments were performed for the following three processes: SMAW, FCAW and GMAW. In both schools, the arc welding processes were performed under inert gas (MIG/TIG) and the students worked in booths of about 1.50 m by 1.80 m, equipped with a local ventilation system. The number of students per group varied, but ranged between 15 and 25 students. Several groups could also work at the same time in different sections of the premises, without any physical separation between them.

The particle size concentration and distribution measurements were performed directly in the students’ booths, at a distance within 50 cm of the welding zone. Although non-personal, the sampling method can be considered as quasi-personal assessment because of close confines of the zone.

### **4.2.2 Aluminium Smelter**

Two sampling campaigns were conducted in an aluminium smelter in the Province of Québec. Particle size concentration and distribution measurements were taken. Two primary aluminium production processes were assessed, the Soderberg process and the prebaked anode process. These are two Hall-Héroult electrolytic reduction processes. The Soderberg process uses a paste of petroleum coke and pitch, placed in hoppers with their ends submerged in molten alumina-cryolite bath, while the second process uses prebaked anodes [134].

The plant assessed under this project is being converted and has begun dismantling the Soderberg potlines to replace them with prebaked anode production lines. The two types of processes assessed are located in contiguous buildings separated by physical barriers, rendering the processes independent. The workers were grouped by similar exposure group according to the trade titles. The Soderberg process groups assessed were: 1) drivers who deposit the briquettes; 2) frame lifters; 3) employees who break the crusts of the electrolytic baths; 4) pressurized overhead crane operators; 5) maintenance employees. The prebaked anode process groups assessed were: 1) pressurized overhead crane operators; 2) anode transport truck (“Berger”) drivers; 3) auxiliary truck (“mule”) drivers; 4) maintenance employees. The carbon anodes from the prebaked anode process are assembled directly in the plant. In our study, this department, called the Anode Sealing Department, was also assessed and classified in two sections: hexapod cleaning (spent anode), and hexapod and carbon section sealing. The workers in these departments are the hexapod cleaning and sealing attendants. In connection with these facilities, the two spent anode cooling rooms (“cemetery”) were also studied.

The particle concentrations in the potrooms were mapped for both processes and for the two anode cooling rooms. Stationary measurements representative of the exposure of the truck drivers and overhead crane operators were also taken during work periods of 1 to 2 hours. Quasi-personal measurements were performed in the Anode Sealing Department for the cleaning and sealing attendants, in the Soderberg process for the maintenance attendants and the employees who break the crusts of the electrolytic baths, and in the prebaked anode process for the maintenance employees. All these measurements were taken during periods of 1 to 2 hours.

A UFP analysis was performed on a JEOL Transmission Electron Microscope (TEM), model JEM-2100F, in both processes. This microscope is equipped with a Field Emission Gun (FEG), operating at 200 kV. It has maximum image resolution of nearly 1 Angstrom. Polycarbonate filters and analysis grids were used on the five finest stages of the ELPI. The analysis grids were glued to the substrates with a standard liquid adhesive. The particles were photographed without any modification to the grids that served to collect the nanoparticles. Chemical composition analyses were also performed with an Oxford Energy Dispersive Spectrometer (EDS).

### **4.2.3 Thermoplastic Processing Industry**

Assessments were performed in the materials innovation research centre of a thermoplastics processing company. The plant evaluated under this study is not yet at the stage of producing materials incorporating NPs, because it is a research centre with the goal of developing products containing nanoparticles that give plastics certain interesting properties, such as thermal

conductivity and strength. The research centre is composed of offices, a meeting room, a quality control laboratory and two rooms, one of which is used for plastics manufacturing. This first room is divided into two parts (storage and processing), separated by an unsealed physical barrier. The other room, called the “pool”, is not currently used by the research centre. The two rooms are not ventilated mechanically, while the rest of the premises are.

The process tested was a twin screw extruder fed with polyethylene granules. Multiwalled CNT fractions were injected into the single screw as additives to the polyethylene. Baytubes® Carbon Nanotubes (C150HP) made by Bayer Material Science (BMS) were used [135]. These agglomerated nanotubes were larger than 100 micrometres, giving them limited potential inhalation exposure, according to the company [136].

Background measurements were taken with three P-Trak particle counters, model 8525, made by TSI, in the centre’s different rooms. Measurements were taken on Monday morning after a shutdown of several days, and then new measurements were taken during operation of the extruder, with and without CNTs. Stationary and quasi-personal measurements were taken.

#### **4.2.4 University Laboratories Producing or Using Nanoparticles**

Measurements were taken in three university research laboratories producing or using NPs.

##### **Laboratory A**

The process used by the first laboratory mills aluminium/copper particles in liquid nitrogen. The objective of the process is to reduce the size and spacing of the particles. A 10-litre mill operating by attrition with a continuous flow of liquid nitrogen is used. The mill consists of stainless steel balls, particles and liquid nitrogen. Thermocouples control the mill temperature (-195°C) and the liquid nitrogen level. The evaporated liquid nitrogen is routed into a hood equipped with a particle filter. An operator collects a sample every hour, necessitating partial dismantling of the mill. The initial particles have a mean diameter of 100 µm. After the first day, the particles were flattened but the size remained the same. It was only after the second day that the mean diameter diminished to a size of 10 to 20 µm, and then by 15 nm after the 3<sup>rd</sup> day of milling.

Stationary measurements of fine and ultrafine particle concentrations were taken near the mill (< 1 m) and 3 metres from the mill. Three days of sampling covering the entire milling process were performed.

##### **Laboratory B**

The second laboratory is a nanocomposite fabricating laboratory. Several tasks are performed in this laboratory. The assessed process consists of placing a CNT suspension in a solvent, styrene. The solution is mixed in a glove box (main chamber) equipped with a transfer box. The nanoparticle weighing steps and the incorporation of the nanoparticles into the styrene are performed in the main chamber.

Stationary measurements of the fine and ultrafine particle concentration were taken near the glove box during CNT handling (<1 m) and 3 m away from the glove box, with two P-Trak 8525 particle counters.

### **Laboratory C**

The third laboratory uses CNTs to reinforce and modify the electrical properties of certain polymers. Nanoparticles are handled at two distinct locations in the laboratory. The CNT powders are handled in a glove box equipped with a vacuum. When the nanotubes are integrated into the polymer, the handling operations are performed under a hood. General ventilation is present in the laboratory. Multiwalled Baytubes® Carbon Nanotubes (C150P) made by Bayer Material Science (BMS) were used [[135](#)]. Background measurements were taken with two P-Trak 8525 particle counters and one DustTrak 8520 particle counter in the two locations where NPs are handled. The concentrations were measured inside the glove box and under the laboratory hood during certain tasks related to NP integration into the polymer (weighing, handling powders) and related to different tests on the polymers formed (breaking, polishing, scratching, drying).



## 5.RESULTS

### 5.1 Welding Schools

#### 5.1.1 School A

The concentrations in School A before the welding operations began were lower than 10,000 particles/cm<sup>3</sup>. Concentrations over 50,000 particles/cm<sup>3</sup> were measured for all processes combined (Table 3 and Figure 1). The oxygen cutting process generated the most particles (300,000 particles/cm<sup>3</sup> on the average), followed by GMAW on aluminium (160,000 particles/cm<sup>3</sup>), GTAW on aluminium (117,000 particles/cm<sup>3</sup>), FCAW on aluminium (116,000 particles/cm<sup>3</sup>), GTAW on stainless steel (94,000 particles/cm<sup>3</sup>), GMAW on steel (89,000 particles/cm<sup>3</sup>) and SMAW (61,000 particles/cm<sup>3</sup>). For the same process, concentrations differences were measured, depending on the metal used, for GTAW and GMAW. In both cases, when aluminium was used, the highest particle concentrations were measured.

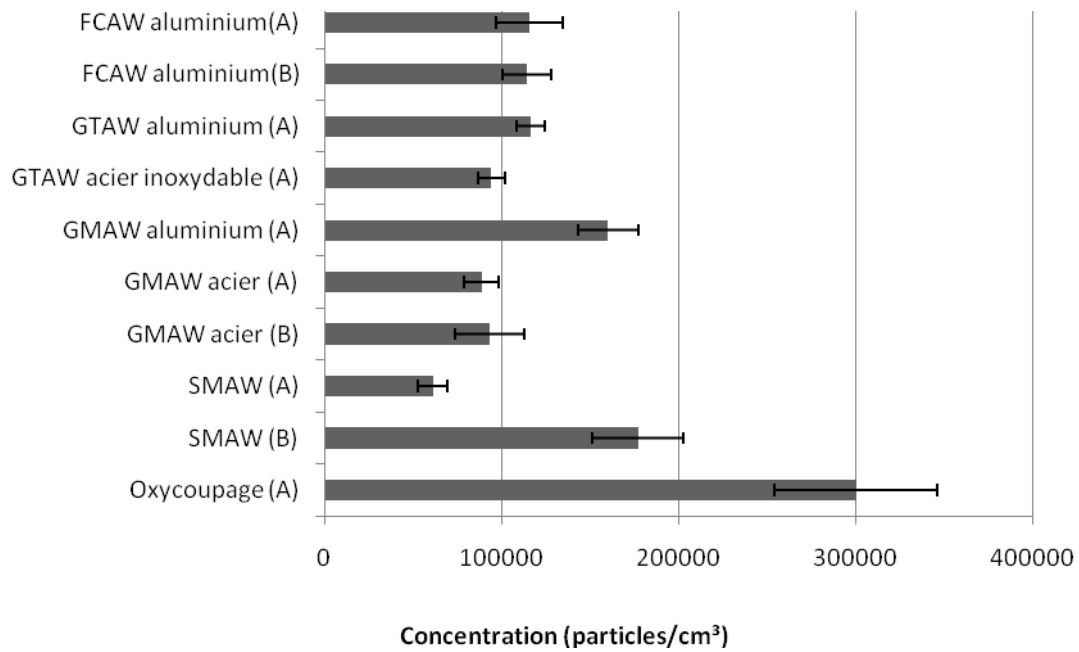
For each measurement, concentration profiles were obtained. Three of these profiles are presented in Figures 2, 3 and 4. These profiles tell us that the students essentially are exposed to peak concentrations. Figure 3, recorded during the GMAW on aluminium process, also indicates that the maximum of 500,000 particles/cm<sup>3</sup> was reached many times.

The particle size distribution assessments, presented in Figure 5, show differences among the processes. The GMAW process generated the biggest particles and FCAW essentially generated nanoscale particles. However, for the four processes tested, over 60% of the particles were nanoscale and bimodal distributions were identified, with the first mode between 20 and 30 nm and the second between 200 and 300 nm.

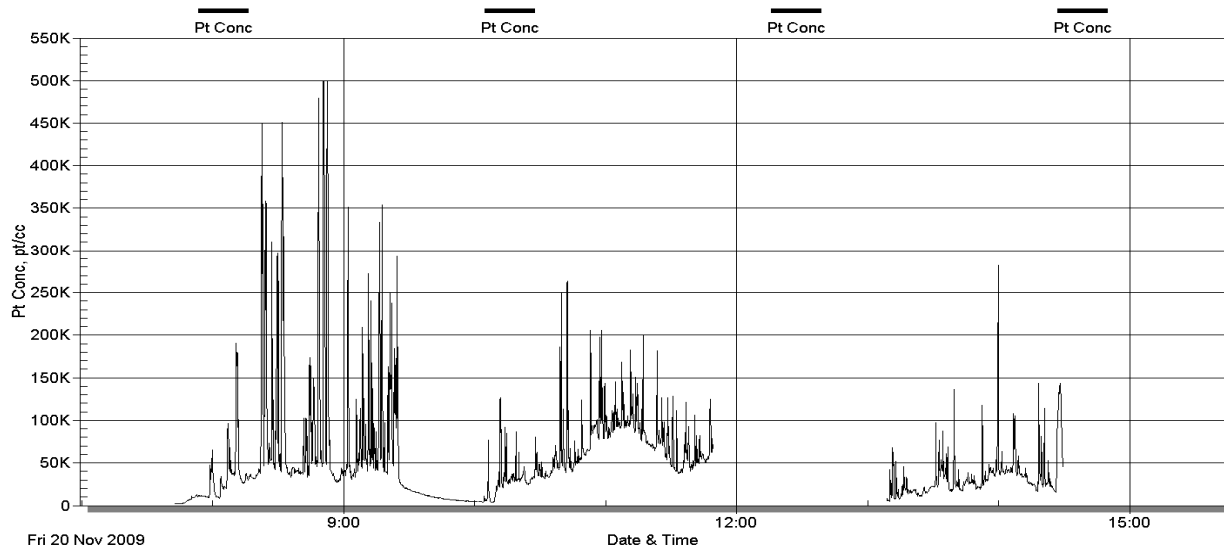
**Table 3 – Mean concentrations (particles/cm<sup>3</sup>) measured in the two welding schools**

<b>Processes</b>	<b>School A</b>	<b>School B</b>
<b>GMAW</b>	Aluminium: 160,000 (7) Steel: 89,000 (10)	- Steel: 92,000 (26)
<b>FCAW</b>	116,000 (6)	114,000 (31)
<b>GTAW</b>	Aluminium: 117,000 (15) Stainless steel: 94,000 (6)	- -
<b>SMAW</b>	61,000 (16)	177,000 (14)
<b>Oxygen cutting</b>	300,000 (6)	-

(x): Number of samples for each process and for each school. Each sample is a mean concentration over a period ranging from 30 minutes to 2 hours.

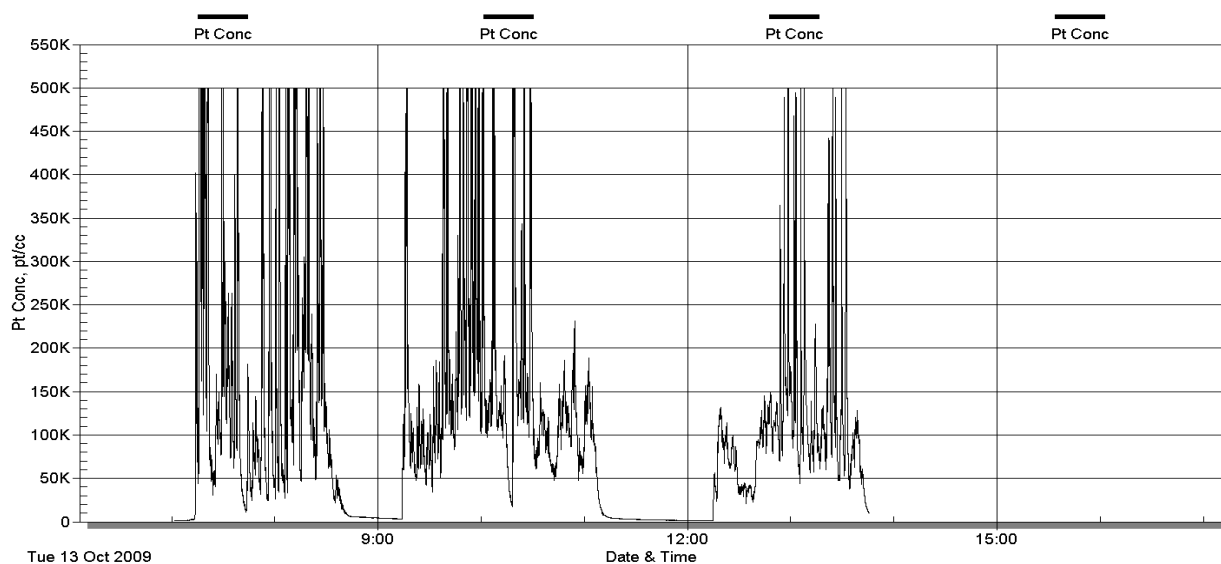


**Figure 1 – Mean concentrations and typical errors measured with the P-Trak particle counters for the welding processes of Schools A and B (school indicated in parentheses)**

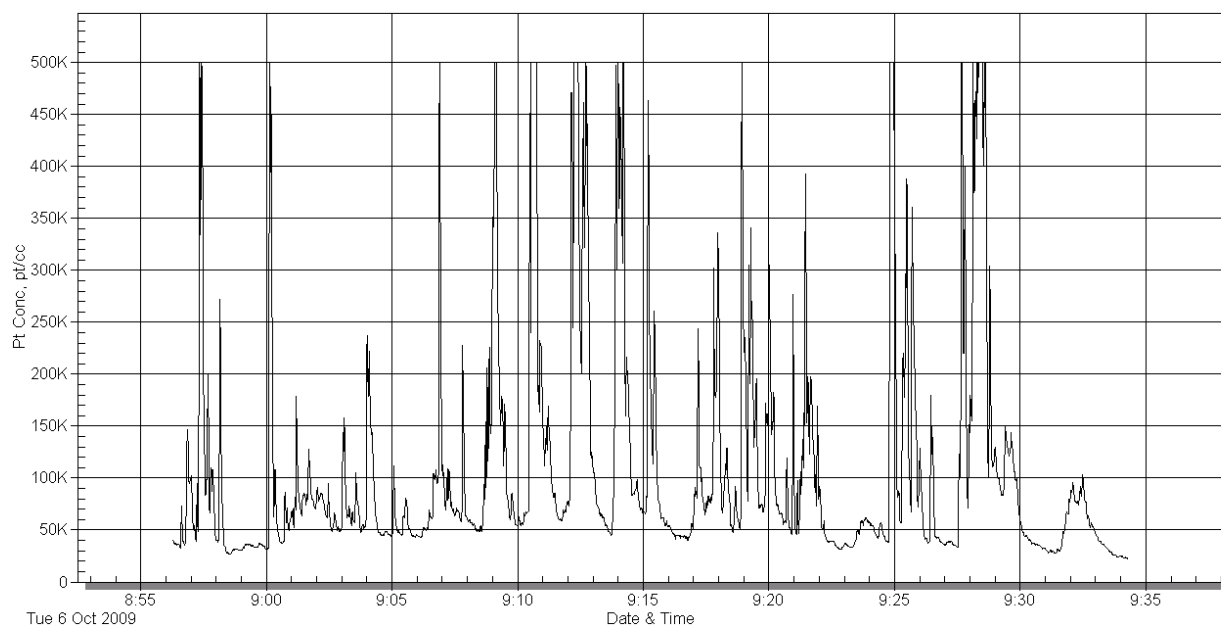


**Figure 2 – Profile of concentrations recorded during one day of sampling for the SMAW process of Welding School A**

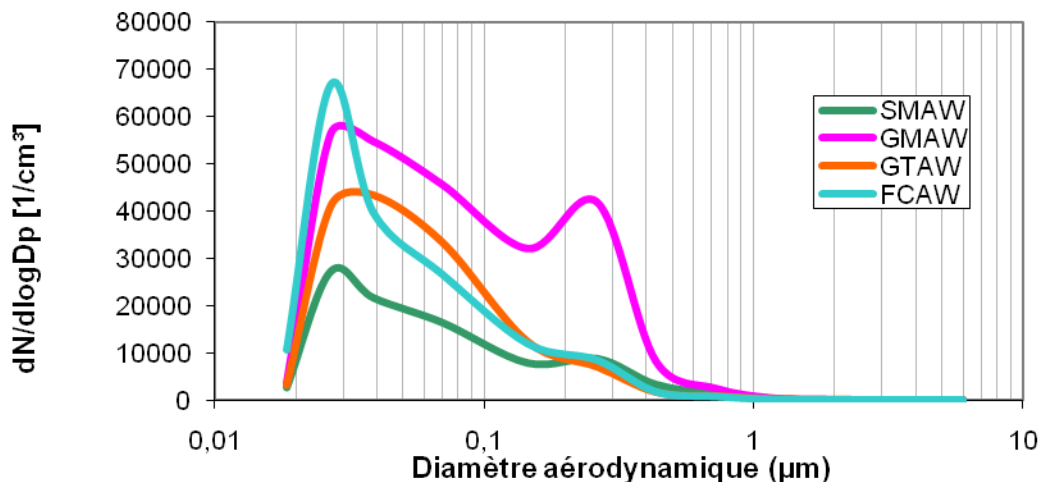




**Figure 3 - Profile of concentrations recorded during one day of sampling for the GMAW on aluminium process of Welding School A**



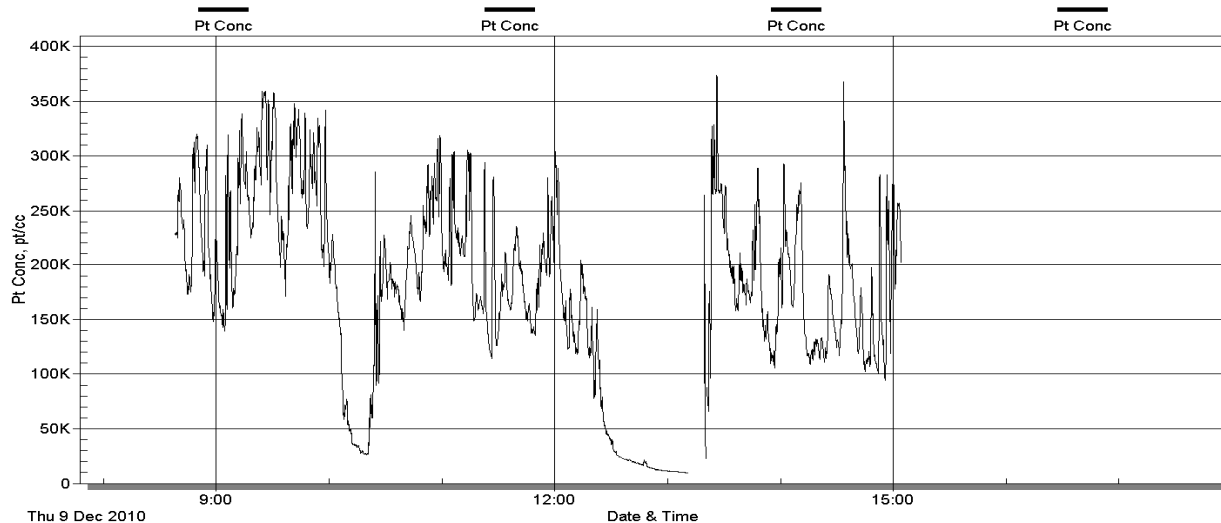
**Figure 4 - Profile of concentrations recorded during 30 minutes of sampling for the SMAW process of Welding School A**



**Figure 5 – Particle size distribution for the welding processes of School A**

### 5.1.2 School B

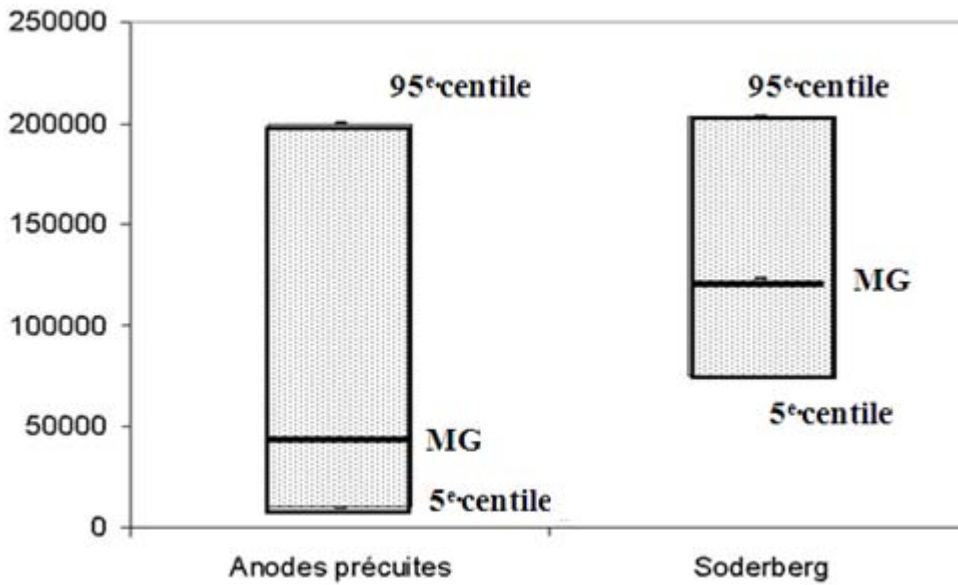
The concentrations measured in School B before the welding operations began were lower than 10,000 particles/cm<sup>3</sup>. Concentrations higher than 50,000 particles/cm<sup>3</sup> were measured for the three processes assessed (Table 3 and Figure 1). Contrary to School A, the concentrations measured during the SMAW processes (177,000 particles/cm<sup>3</sup>) were the highest, followed by FCAW (114,000 particles/cm<sup>3</sup>) and GMAW on steel (92,000 particles/cm<sup>3</sup>). The concentration profiles also show many peak concentrations, even though these peaks are less prominent for the SMAW process, with concentrations always higher than 100,000 particles/cm<sup>3</sup> during the welding periods (see black lines, Figure 6).



**Figure 6 – Profile of concentrations recorded during one day of sampling for the SMAW process of Welding School B**

## 5.2 Aluminium Smelter

The particle concentrations outside the plant were also lower than 7,000 particles/cm<sup>3</sup>. The mean particle concentrations measured with the P-Trak during mapping were 144,000 particles/cm<sup>3</sup> in the Soderberg process, 70,000 particles/cm<sup>3</sup> in the prebaked anode process and 238,000 and 44,000 in the anode cooling rooms (Table 4). It should be noted that in Anode Cooling Room B, there were anodes coming out of the electrolytic baths; these were hot anodes. In Room A, some anodes had been in this room for at least 12 hours; these were lukewarm or cold anodes. Figure 7 presents the geometric means (GM) of the same background measurements for the two processes. The GM of the Soderberg process in Room A is about three times higher than the GM of the prebaked anodes, and the 5<sup>th</sup> and 95<sup>th</sup> measurement percentiles indicate a wider range in the prebaked anode process, a sign of greater variability. The geometric standard deviation (GSD) for the prebaked anodes is 2.6, while the GSD of the Soderberg process is only 1.7.



GM: Geometric mean

**Figure 7 – Particle concentrations in the Soderberg and prebaked anode processes**

**Table 4 – Descriptive statistics of the particle concentrations (particles/cm<sup>3</sup>) measured with P-Trak particle counters during mapping of the Soderberg and prebaked anode processes and in the anode cooling rooms**

	<b>Soderberg process</b>	<b>Prebaked anode process</b>	<b>Cooling Room A</b>	<b>Cooling Room B</b>
n	137	205	24	20
Mean	144,000	70,000	44,000	238,000
Maximum	450,000	500,000	120,000	500,000
Minimum	7,000	15,000	22,000	76,000
GM	123,000	42,000	37,000	213,000
GSD	1.7	2.6	1.7	1.6

\* The background noise concentrations were lower than 7,000 particles/cm<sup>3</sup>

GM: geometric mean

GSD: geometric standard deviation

**Table 5 – Descriptive statistics of particle concentrations (particles/cm<sup>3</sup>) measured with P-Trak particle counters during quasi-personal measurements in i) the Soderberg process and ii) the prebaked anode process**

<b>i</b>		<b>Soderberg</b>			
<b>Trades</b>	<b>Overhead crane operator</b>	<b>Maintenance</b>	<b>Crust breaker</b>	<b>Frame lifter operator</b>	<b>Briquette driver</b>
N	4	11	3	5	4
Mean	16,000	123,000	186,000	100,000	67,000
Maximum	22,000	209,000	251,000	131,000	159,000
Minimum	14,000	53,000	125,000	70,000	14,000
GM	16,000	113,000	178,000	97,000	47,000
GSD	1.2	2.0	1.4	1.3	2.7

<b>ii</b>		<b>Prebaked anode process</b>				
<b>Trades</b>	<b>Overhead crane operator</b>	<b>Maintenance</b>	<b>Mule driver</b>	<b>Anode transport driver</b>	<b>Sealing</b>	<b>Hexapod cleaner</b>
N	3	12	6	5	10	7
Mean	29,000	99,000	74,000	17,000	62,000	79,000
Maximum	46,000	217,000	113,000	31,000	131,000	133,000
Minimum	10,000	16,000	28,000	6,000	27,000	25,000
GM	24,000	83,000	66,000	14,000	55,000	70,000
GSD	2.2	2.0	1.7	1.9	1.7	1.8

\* The background noise concentrations were lower than 7,000 particles/cm<sup>3</sup>

GM: geometric mean

GSD: geometric standard deviation

Concerning quasi-personal measurements, the concentrations were also higher in the Soderberg process than in the prebaked anode process. The GM of the concentrations for the workers who break the crusts of the electrolytic baths was 178,000 particles/cm<sup>3</sup>, followed by maintenance employees with 113,000 particles/cm<sup>3</sup> and then frame lifters with 97,000 particles/cm<sup>3</sup>. The exposure of overhead crane operators was lower than for the other workers in the Soderberg process (Table 5).

Anode transport drivers (GM=14,000 particles/cm<sup>3</sup>) had the lowest concentrations in the prebaked anode process, followed, in ascending order, by pressurized overhead crane operators (GM=24,000 particles/cm<sup>3</sup>), the workers who seal the anodes (GM=55,000 particles/cm<sup>3</sup>), mule drivers (GM=66,000 particles/cm<sup>3</sup>), hexapod cleaners (GM=70,000 particles/cm<sup>3</sup>) and maintenance employees (GM=83,000 particles/cm<sup>3</sup>).

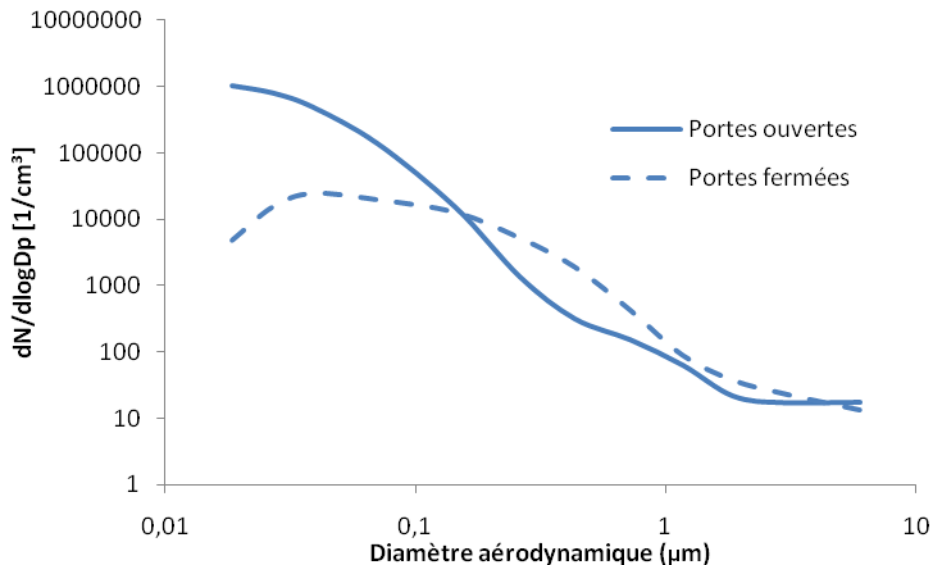
Table 6 presents the proportions of particles measured for each of the 12 stages of the ELPI impactor for the Soderberg and prebaked anode processes. The mean aerodynamic diameter of the particles collected in the two processes was smaller than 30 nm. In addition, very high proportions (>97%) of the particles had an aerodynamic diameter smaller than 98 nm in the two processes.

Figure 8 indicates that the fine fractions were bigger in the prebaked anode process when the doors were open. In addition, Figure 9 shows granulometric distribution differences depending on the temperature of the anodes in the cooling rooms. The curves cross each other, which indicates that, despite the concentration differences measured, granulometric distribution differences were also identified. Thus, when the anodes came out of baths, as very hot anodes, they generated high concentrations of airborne nanoscale particles, while when they were cold, larger particles had been measured (>100nm).

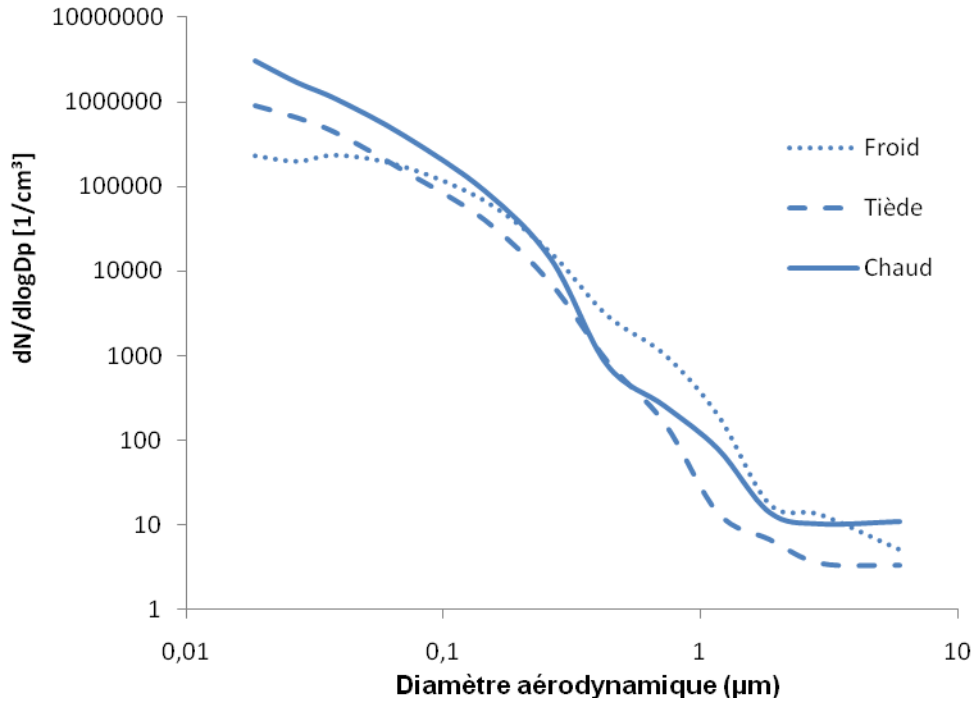
The results of the analyses performed on the TEM/EDS are presented in Table 7. The main elements detected are ranked in descending order for the five smallest stages of the ELPI. Overall, Al, Na and F are the elements found most often in the analyses, and particles simultaneously containing the elements Al, Na and F are the most common in both processes, with respective proportions of 69% in the prebaked anode process and 54% in the Soderberg process. Particles containing Ti were also identified, with proportions of 9% (prebaked anodes) and 33% (Soderberg). We should also note the presence of arsenic in both processes. In addition, 25% (prebaked anodes) and 31% (Soderberg) of the particles examined were fibres and were identified in the five stages of the ELPI. Fibrous particles are presented in Figures 10 and 12; they contain the elements Al and Na (the C, Si, O and Cu peaks are specific to the substrate and the grid). Other spherical or irregularly shaped particles are presented in Figures 11, 13 and 14. These particles contain the elements Ti (Figure 11), Al, F, Na, S (Figure 13) and Al, Na, S, As (Figure 14).

**Table 6 - Proportions of particles in the ELPI stages (sampling without filter stage) for the Soderberg and prebaked anode processes**

Cutpoint stages in nm	Proportion of particles (%)	
	Soderberg process	Prebaked anode process
24	42	77
30	32	18
50	19	3
98	4	<1
214	1	<1
321	<1	<1
583	<1	<1
902	<1	<1
1524	<1	<1
2272	<1	<1
3796	<1	<1
6351	<1	<1



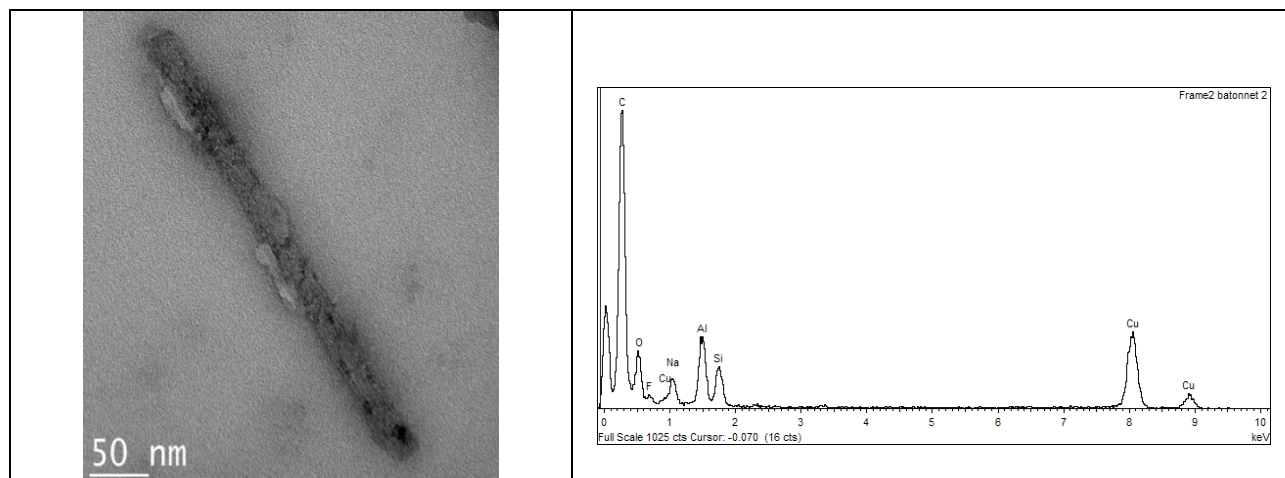
**Figure 8 - Comparison of particle granulometric distributions based on opening of the potroom doors in the prebaked anode process**



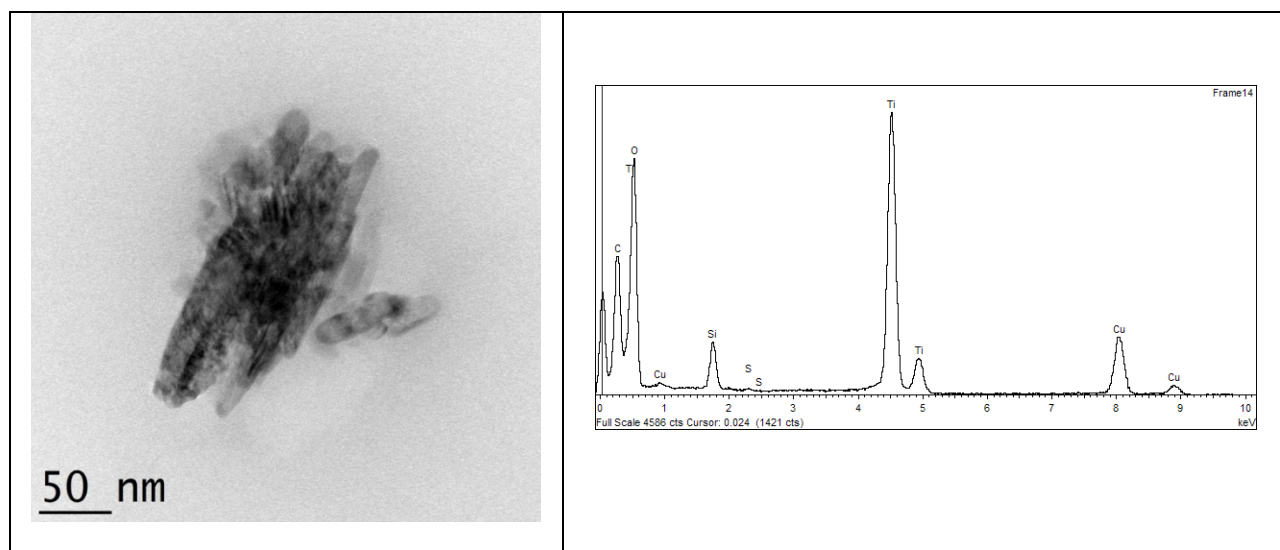
**Figure 9 - Comparison of particle granulometric distributions based on the temperature of the anodes in the cooling rooms**

**Table 7 – Main ultrafine elements detected during TEM/EDS analyses in the two electrolysis processes**

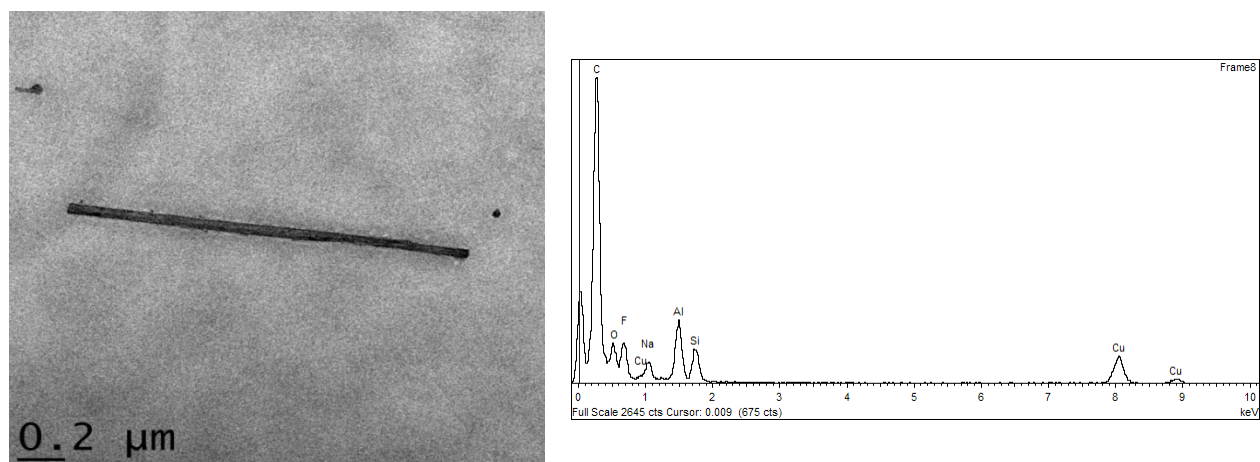
	ELPI, cutpoint diameters in nm (setup in “collection” mode)				
	28	55	93	156	263
Soderberg process	Ti, Fe, Al, Na, S, K, F, Ti, Ca	Al, Na, K, S, Fe, Ca, F	Ti, S, Fe, Na, Al, K, Na, Ca	Al, Na, F, K, S, Cl, Ti, As	Al, Na, F, S, K, Fe, Ti, As, Cl, V, Au, Pb, Zn
Prebaked anode process	Al, Na, F, K, S, Fe, Mn, Ti	Al, Na, F, K, S, Ti, As	Al, Na, F, K, S, Fe, Ti	Al, Na, F, K, Ti, S, Fe, Mn	Na, Al, F, K, S, Ti, As, Cl



**Figure 10 – Prebaked anode process sample from the ELPI 28 nm stage**

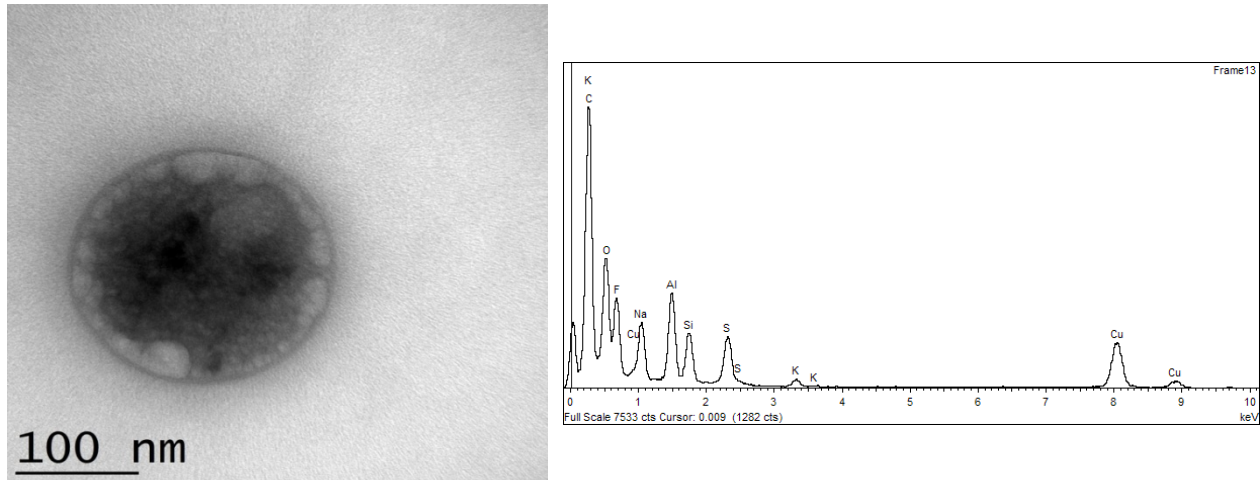


**Figure 11 –Soderberg process sample from the ELPI 28 nm stage**

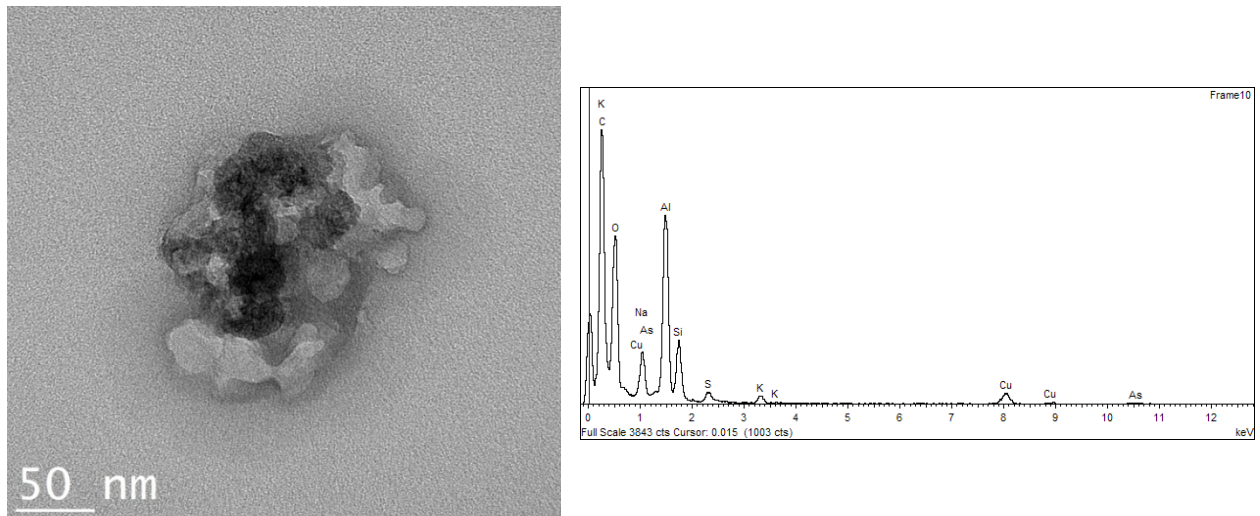


**Figure 12 – Prebaked anode process sample from the ELPI 93 nm stage**





**Figure 13 - Soderberg process sample from the ELPI 156 nm stage**



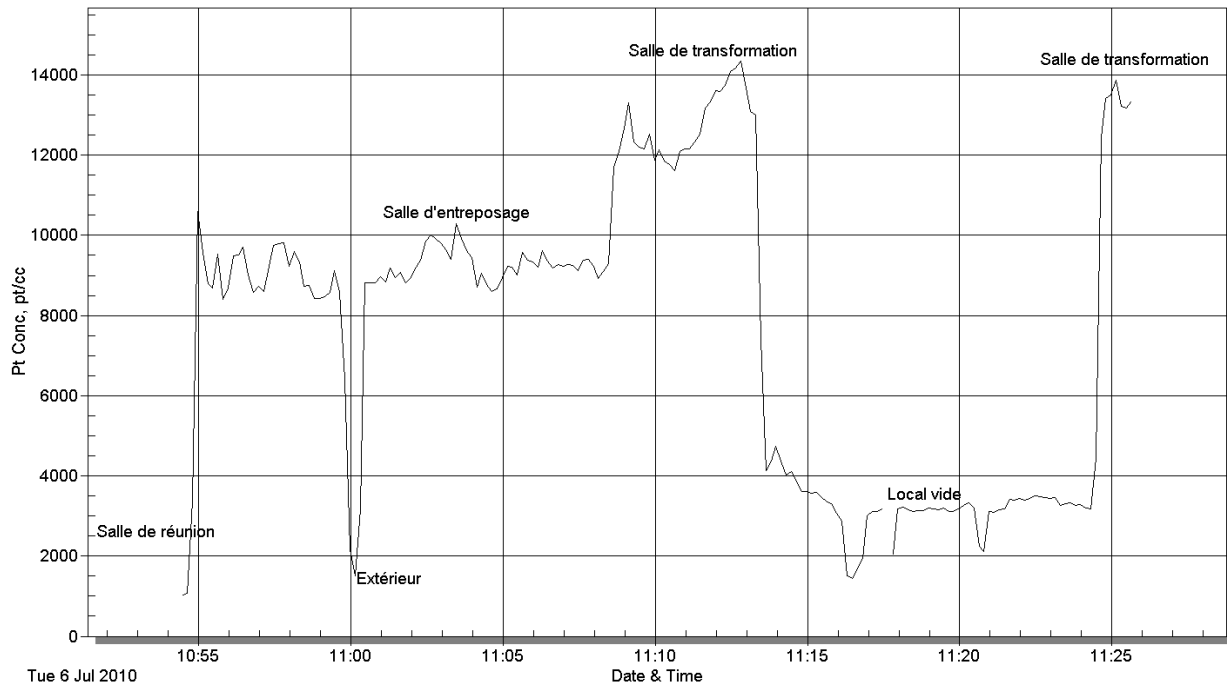
**Figure 14 – Prebaked anode process sample from the ELPI 156 nm stage**

### 5.3 Thermoplastic Processing Industry

High particle levels were measured in the storage and processing rooms, even after several days of shutdown of the facility. Table 8 presents the concentration results from mapping of the premises and indicates mean concentrations of 8,100 (P-Trak#1) and 9,160 (P-Trak#2) particles/cm<sup>3</sup> in the storage room and 11,200 (P-Trak#1) and 13,500 (P-Trak#2) particles/cm<sup>3</sup> in the processing room. By way of comparison, the concentration was around 1,500 particles/cm<sup>3</sup> outside the building, 1,200 particles/cm<sup>3</sup> in the meeting room and 900 particles/cm<sup>3</sup> in the ventilated quality control laboratory. Figure 15 presents the continuous profile of particle concentrations measured during the visit to the premises before operation of the extruder.

**Table 8 – Mean particle levels in the storage and processing rooms**

	Mean [min-max] particle concentrations (particles/cm <sup>3</sup> ) in the storage room (n)	Mean [min-max] particle concentrations (particles/cm <sup>3</sup> ) in the processing room (n)
P-Trak #1	8,100 [7,800-8,900] (8)	11,200 [10,000-12,500] (9)
P-Trak #2	9,160 [8,500-9,500] (8)	13,500 [12,000-14,000] (9)



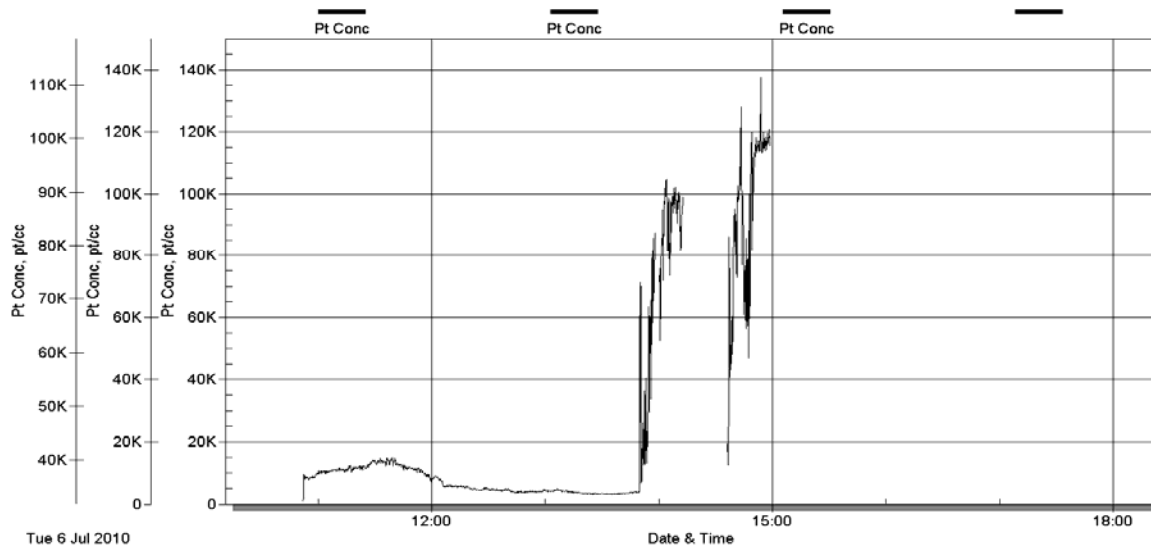
**Figure 15 – Profile of particle concentrations measured in the research centre’s different rooms**

During operation of the extruder, a substantial increase in particle levels was observed in the storage and processing rooms, with concentrations reaching 100,000 particles/cm<sup>3</sup> at a distance of 3 metres from the extruder. Figure 16 presents the particle concentrations measured from 11 a.m. to 3 p.m. with extruder startup at 1:50 p.m. During this recording period, a reduction in the concentrations was also recognized between 11:30 a.m. and 1:30 p.m., resulting from provoked aeration (opening of the windows) of the storage and processing rooms, where the levels fell from 13,000 to 3,500 particles/cm<sup>3</sup>.

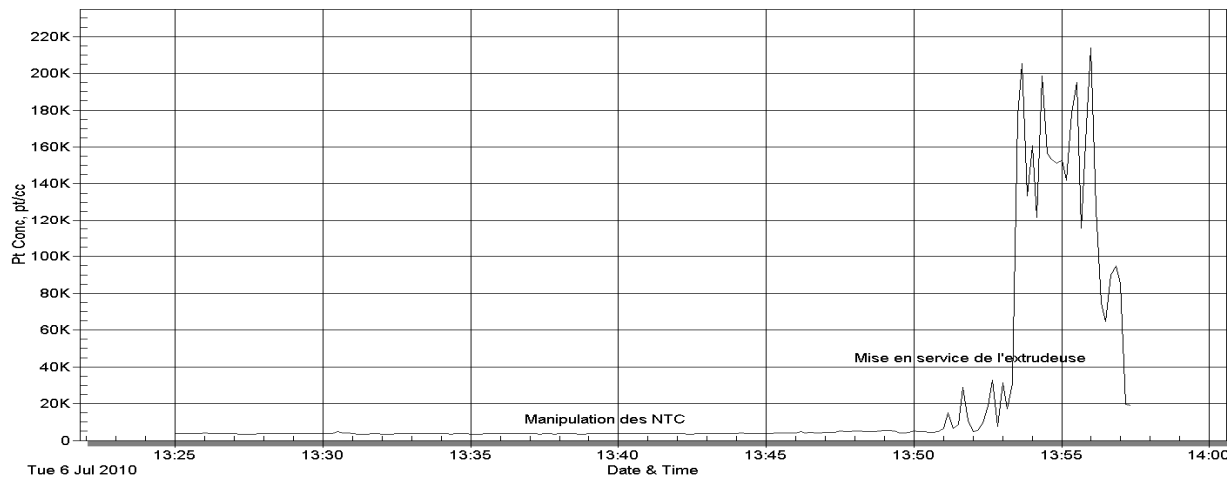
Figure 17 presents the recording of the quasi-personal particle concentrations during CNT preparation and during extruder startup. There was no change in the particle concentrations

during CNT handling, while a net increase in the concentrations was observed during extruder startup.

The mean particle concentration measured in the absence of CNTs at a one-metre distance from the extruder was 288,912 particles/cm<sup>3</sup>, while a mean concentration of 227,430 particles/cm<sup>3</sup> was measured during operation of extruder with CNTs.



**Figure 16 – Particle concentrations measured in the processing room**

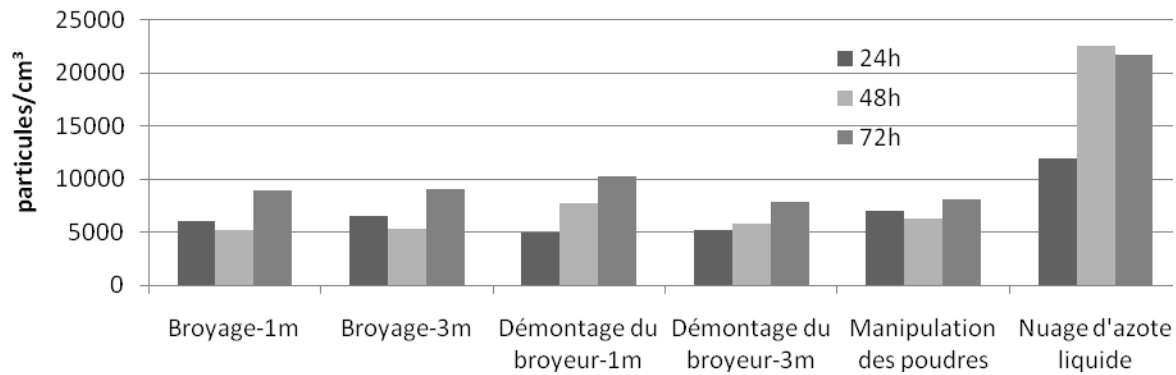


**Figure 17 – Quasi-personal particle concentrations measured during CNT handling and extruder startup**

## 5.4 University Laboratories Producing or Using Nanoparticles

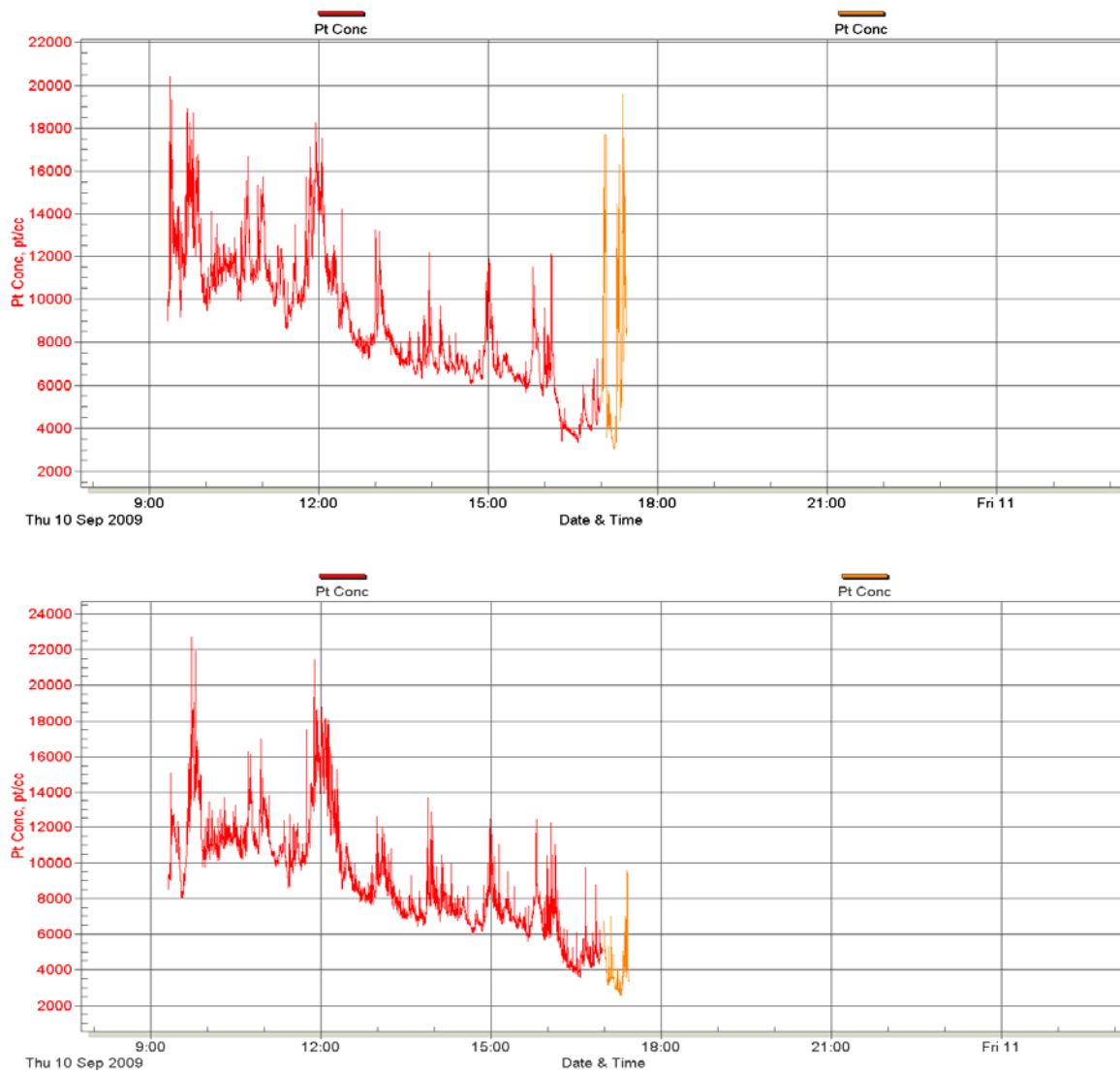
### 5.4.1 Laboratory A

The levels measured in the cryomilling process are low and are identical or close to the laboratory's background noise concentrations (between 4,000 and 6,000 particles/cm<sup>3</sup>). Figure 18 presents the concentrations measured during milling, dismantling of the mill and handling of the powders, and in the gas plume released by the liquid nitrogen. The highest concentrations were measured in the gas plume concentrations of liquid nitrogen, at more than 10,000 particles/cm<sup>3</sup>. Slightly higher concentrations were also measured on the 3<sup>rd</sup> day of sampling.



**Figure 18 – Particle concentrations in the aluminium/copper nanoparticle production laboratory (Laboratory A)**

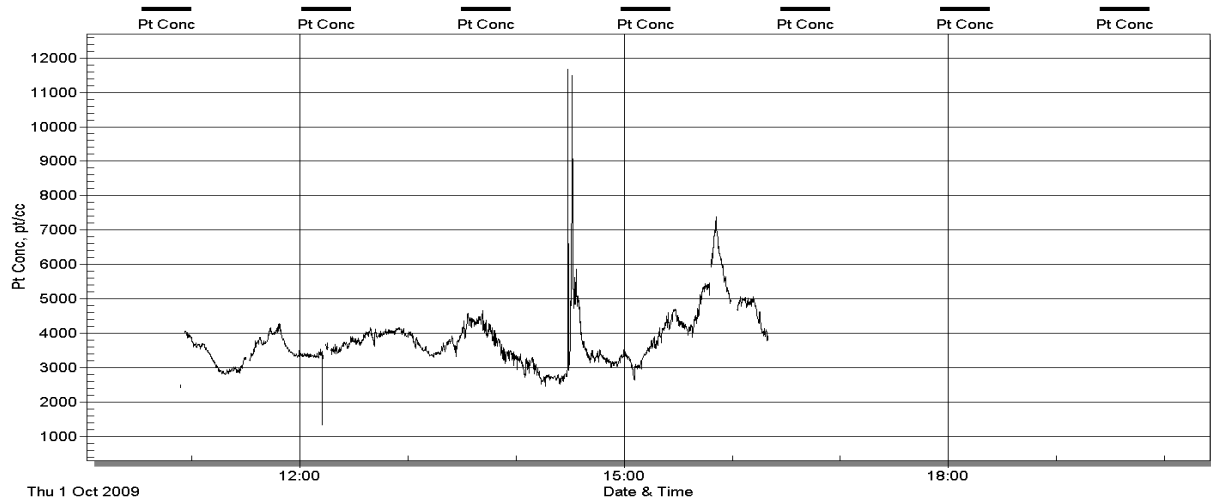
Figure 19 presents the particle concentration profiles near the mill (i) and 3 metres from the mill (ii), measured with the P-Trak particle counters on the 3<sup>rd</sup> day of sampling. Short peak concentrations are visible in the two profiles during each collection, i.e. at 10:50 a.m., 12 noon, 1 p.m., 2 p.m., 3 p.m. and 4 p.m. Only the complete dismantling stage (between 5 p.m. and 5:30 p.m.) shows differences between the two sampling stations, with peak concentrations close to the source but none 3 m away. It must be noted that the hourly collections were placed on the floor between the two measuring zones. A decrease in concentrations is also recognized during the day in Figures i and ii, attributable to an overall reduction of the laboratory background noise.



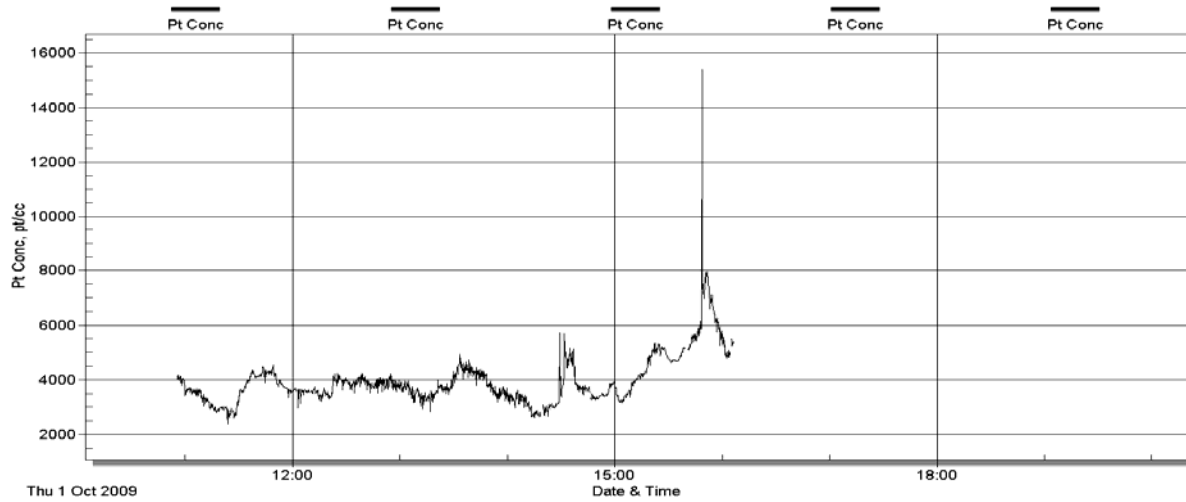
**Figure 19 – Profiles of particle concentrations measured with P-Trak particle counters on the 3<sup>rd</sup> day of sampling near the mill (i) and 3 metres from the mill (ii) (Laboratory A)**

### 5.4.2 Laboratory B

Figure 20 presents a profile of particle concentrations measured during CNT handling in the laboratory glove box at a 1 metre distance, while Figure 21 presents the same data at a 3 metre distance. There is no significant difference between the concentration profiles, while the weighted mean concentrations measured are also very similar, at 3,832 particles/cm<sup>3</sup> for the zone near the glove box and 3,974 particles/cm<sup>3</sup> for the zone farther away. The background noise concentration corresponds to the initial concentrations of Figures 20 and 21, about 4,000 particles/cm<sup>3</sup>.



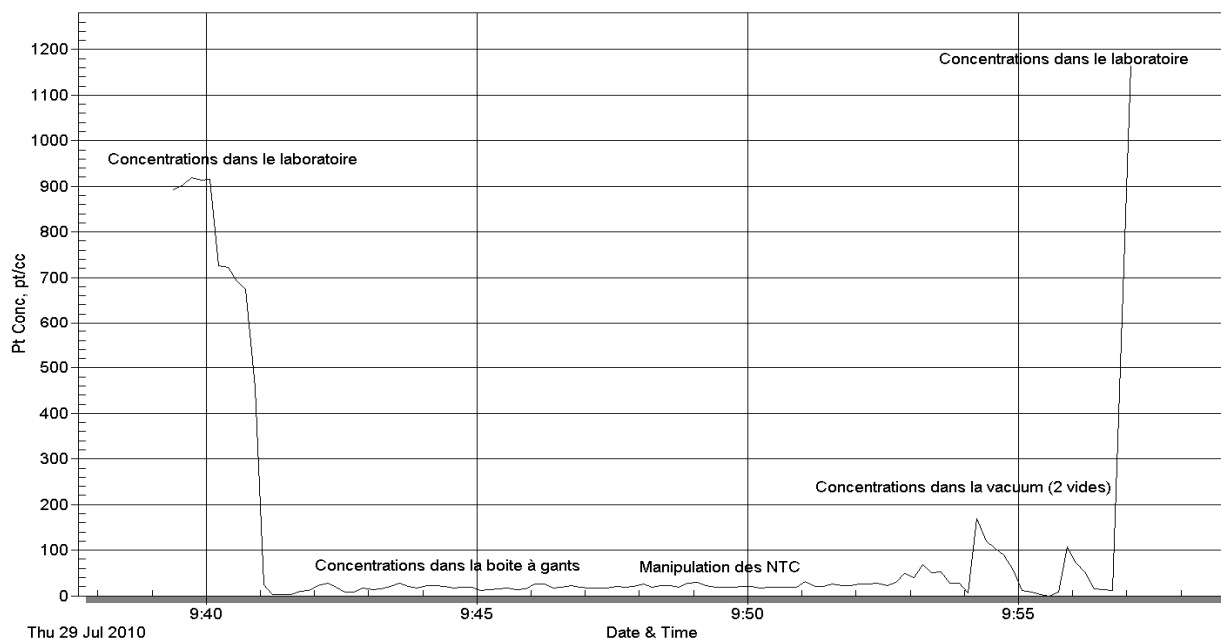
**Figure 20 – Particle concentrations measured 1 metre from the glove box during CNT handling in Laboratory B**



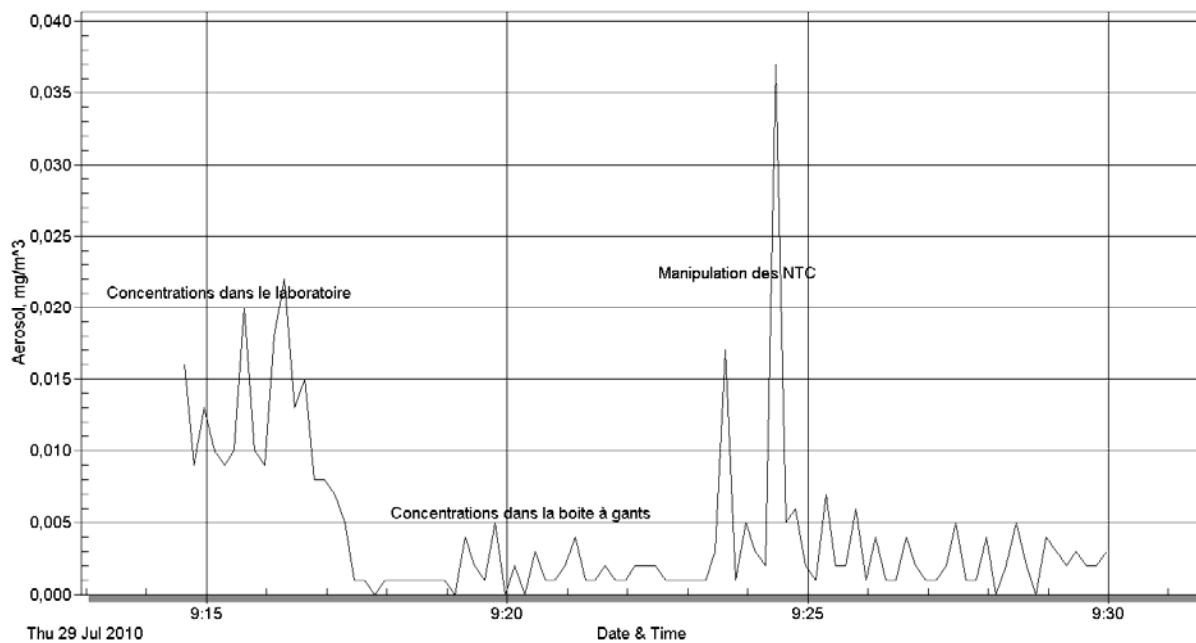
**Figure 21 – Particle concentrations measured 3 metres from the glove box during CNT handling in Laboratory B**

### 5.4.3 Laboratory C

Figures 22 and 23 present the continuous profiles of the particle concentrations (particles/cm<sup>3</sup>) and aerosol concentrations (mg/m<sup>3</sup>) measured in the glove box during CNT handling. The particle concentrations in the laboratory were about 900 particles/cm<sup>3</sup> and the mass concentrations were 0.016 mg/m<sup>3</sup> on average. In the glove box, much lower concentrations were measured, between 20 and 30 particles/cm<sup>3</sup> and between 0.001 and 0.005 mg/m<sup>3</sup>. No particle level increase was measured with the P-Trak (Figure 22), while two peaks were recorded with the DustTrak during CNT handling (Figure 23). However, these peaks indicate relatively low concentrations of 0.02 and 0.04 mg/m<sup>3</sup>.

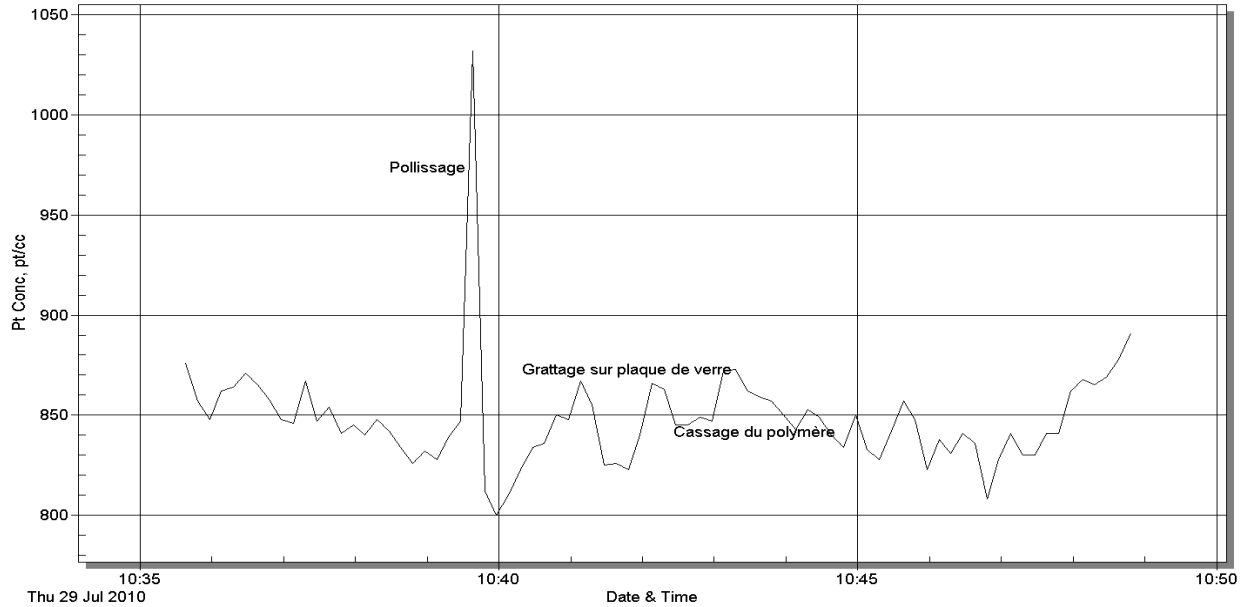


**Figure 22 – Particle concentrations measured in the glove box during CNT handling in Laboratory C**

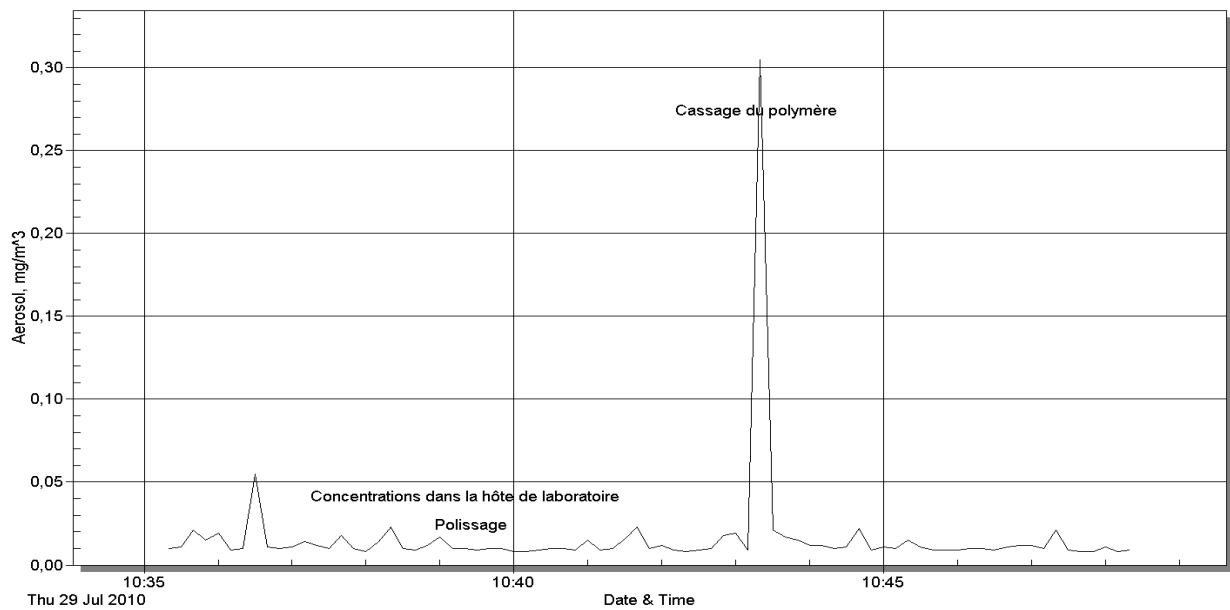


**Figure 23 – Aerosol concentrations measured in the glove box during CNT handling in Laboratory C**

Figures 24 and 25 present the continuous profiles of the particle concentrations (particles/cm<sup>3</sup>) and aerosol concentrations (mg/m<sup>3</sup>) measured during polymer handling under the laboratory hood. The particle and aerosol concentrations are similar to those measured in the laboratory, i.e. between 800 and 1,000 particles/cm<sup>3</sup> and between 0.01 and 0.02 mg/m<sup>3</sup>, respectively. However, a peak is noted in each figure, referring to two distinct tasks, polymer polishing for the numeric concentration (Figure 24) sand polymer breaking for the mass concentrations (Figure 25).



**Figure 24 – Particle concentrations measured under the laboratory hood during polymer handling in Laboratory C**



**Figure 25 – Aerosol concentrations measured under the laboratory hood during polymer handling in Laboratory C**



## 6. DISCUSSION

### 6.1 Welding Schools

The measurements taken in the two welding schools indicate that the apprentice welders are exposed to high particle concentrations (between 61,000 and 300,000 particles/cm<sup>3</sup>). Most of these particles have an aerodynamic diameter smaller than 100 nm. In addition, the granulometric distribution profiles of the four assessed processes show bimodal distributions, with the first mode between 20 and 30 nm and the second mode between 200 and 300 nm. Pfefferkorn et al. [100] also showed a bimodal distribution for an aluminium friction stir welding process, with the first peak at about 30 nm and the second at 550 nm, measured with an EEPS. The same authors indicate that two particle types are found in the aerosols of this process: particles generated mechanically by tearing at the material, and metal particles produced by condensation, mostly spherical, with a unit diameter of 30 nm. Particles of this second type form agglomerated particle chains [100]. In our study, the processes used did not result in tearing of the particles as in the friction stir welding process. The two modes identified then essentially would result from the effect of agglomeration of the unitary metal oxide particles formed by nucleation [58]. A new characterization study by TEM/EDS using the ELPI's impactor for selective collection of the particles would allow validation of this hypothesis.

The results indicate that the welding processes and the metal used may be key determinants of exposure to fine and ultrafine particles. Other determinants are also reported in the literature. Thus, in the SMAW process, Soward et al. [137] showed that the electrode type was a determinant of particle exposure concentrations. Hovde and Raynor showed that the voltage used for welding was also a key determinant of exposure to fumes and that the particle concentrations were three times higher at 23.5 V than at 16 V for a GMAW welding process [23]. In our study, the students were followed over several work weeks, spread over several months, during which many exercises were performed. Only the work environment, the process and the metal being welded were controlled, but different voltages, different electrodes (e.g. E7018, E4918, E6011 for SMAW) or different wire electrode types could be used by the students. These parameters could not be controlled within the framework of this study. These unconsidered parameters could explain in part the differences obtained for the concentrations of the SMAW process between the two schools, i.e. 61,000 particles/cm<sup>3</sup> for School A and 177,000 particles/cm<sup>3</sup> for School B. On the other hand, in our measurements, very close concentrations were measured in both schools for the FCAW and GMAW on steel processes, with concentrations of 116,000 (School A) and 114,000 particles/cm<sup>3</sup> (School B) for the first process and 89,000 (School A) and 92,000 (School B) particles/cm<sup>3</sup> for the second process. These results suggest that, despite the above-mentioned uncontrolled parameters, the process itself appears to be a key determinant of exposure. Schoonover et al. [138] showed that the exposures to metal welding fumes of workers performing the GMAW and SMAW processes were higher than those of the GTAW process. Those measurements were taken in mass units with 37 mm cassettes, while the measurements taken in our study only considered particle number concentrations with diameters smaller than 1 µm. These conceptual differences do not allow a comparison between the two measurement methods, but suggest differences based on them.

Four concentrations profiles were presented in this study (Figures 2, 3, 4 and 6). The results indicate that the apprentices are exposed to high peak particle concentrations during welding activities. However, a difference was noted between the SMAW profiles of Schools A and B. Indeed, the concentrations in School B remain at relatively high levels, above 100,000 particles/cm<sup>3</sup>, between welding activities. This could reflect insufficient local ventilation in this school, then partially explaining the differences obtained for the SMAW process concentrations. However, in general, the peak concentrations indicate good efficiency of the local ventilation installations, because the peak concentrations are short term. This implies that if a respiratory protection program is established, it should focus directly on the welding periods. The P-Trak and the ELPI are direct reading instruments with a very good response time, allowing precise characterization of these peaks. However, on several occasions, the results underestimated the actual exposure, because several peak particle concentrations exceeded the instrument's limit of 500,000 particles/cm<sup>3</sup>. Other authors recognized the importance of proceeding with assessments of welding fume exposures with direct reading instruments to characterize these peaks [138].

Finally, the data presented in this study allows characterization of the apprentices' exposures to fine and ultrafine particles and a better understanding of the different determinants of these occupational exposures. This data is especially important, given that epidemiological studies suggest that apprentice welders can develop early respiratory symptoms, a warning sign of the possibility of developing occupational asthma [139].

## 6.2 Aluminium Smelter

The results confirm the major presence of nanoscale particles in the two aluminium production processes. On the average, the prebaked anode process generates fewer particles than the Soderberg process, although high particle levels were measured during specific activities, such as changing anodes. High particle concentrations were also measured in the anode cooling rooms and in the prebaked anode fabricating processes, with concentrations reaching 500,000 particles/cm<sup>3</sup>. These results indicate that it is important to consider the occupational exposures in these rooms. We also showed in this study that the workers most exposed were those who manually broke the crusts on the electrolytic baths. Gylseth et al. [95] already indicated that these workers were exposed to high fibrous particle levels, but without quantifying them in terms of number of particles.

The granulometric distribution assessment confirms the major presence of UFPs in this work environment. Our results indicate that over 90% of the particles are nanoscale, and thus smaller than 100 nm. These results agree with the measurements taken with SMPS in other studies [17, 19]. More specifically, Thomassen et al. [19] reported that the electrical mobility diameters were about 40 nm in the Soderberg process and 20 nm in the prebaked anode process.

Several UFP exposure determinants were identified in this study. The finest particles thus are found in high concentrations near the pots, when the doors are open, and/or during handling of hot anodes. These results confirm that the longer the life of the particles, the more they gather by agglomeration and thus increase in size, while the overall numerical concentration decreases. These phenomena are known but still have little documentation in the work environment. Finally, understanding these determinants is essential to proceeding with occupational UFP

exposure assessments, because the collection locations and the instrument response time then become crucial factors in these assessments.

The microscopic (TEM/EDS) studies presented in this report only concern fine and ultrafine aerosol fractions, and thus are not representative of the workers' overall exposure. Furthermore, the elements C, Si, O and Cu could not be assessed, because they are part of the background noise (substrate and analysis grid). However, the TEM/EDS study indicates that most of the workers are exposed to particles containing the elements Al, Na and F, with proportions of 69% (prebaked anode process) and 54% (Soderberg process). These results agree with the study by Höflich et al. [140], who indicate that sodium  $\beta$ -alumina ( $\text{NaAl}_{11}\text{O}_{17}$ ) and cryolite ( $\text{Na}_3\text{AlF}_6$ ) were the oxides and fluorides most present in aluminium smelters. Other similar compositions were reported in the studies by Gylseth et al. [95] and Thomassen et al. [19].

Several fibrous particles were identified during TEM assessment. The fibre proportions were 25% in the Soderberg process and 31% in the prebaked anode process, which corresponds to the 30% rate mentioned by Thomassen et al. [19]. Some of these particles were identified in the prebaked anode process when there had not been any anode change in progress, suggesting again that the workers can be exposed to these fibres in all potrooms at any time. Gylseth et al. [95] already reported that high fibre concentrations ranging from 9 to 720 fibres/cm<sup>3</sup> had been measured in the Soderberg and prebaked anode processes. These fibres were described as smaller than 0.1  $\mu\text{m}$  in diameter and shorter than 5  $\mu\text{m}$ . Voisin et al. [141] also confirmed the presence of short aluminium fibres (with mean lengths of 1 to 2  $\mu\text{m}$ ) in the bronchoalveolar fluid of four aluminium smelter workers, and the authors considered these fibres to be different forms of aluminium oxides. These same authors [141] also indicated that these fibres were highly biopersistent in the airway, because they were found in biological samples more than five years after the end of exposure. Our study showed that these fibres can have nanoscale aerodynamic diameters, because several fibres were observed by TEM in the ELPI's finest stages.

Finally, the high Ti rates observed and the presence of arsenic in the samples are new data. Höflich et al. [140] already indicated the presence of Ti oxides in their characterization of potroom dusts. However, the proportions were clearly lower than those obtained in this study. These differences could be explained by the fact that only the fine and ultrafine aerosol fractions were considered in this study. The small number of particles analyzed by TEM/EDS (about 170 particles) could also explain this discrepancy and further evaluation is required. Indeed, since our study is the first to have performed a TEM/EDS analysis by preselection of fine and ultrafine aerosol fractions, new studies are necessary to confirm these results.

### 6.3 Thermoplastic Processing Industry

The results indicate the major presence of fine and ultrafine particles in the extrusion process studied. The high particle levels measured when there was no operation, and the progressive and significant increase in the concentrations presented in Figures 16 and 17, result from a lack of general ventilation in the storage and processing rooms. Provoked aeration of the premises (opening the doors and windows) for approximately two hours reduced the concentrations to arrive at levels close to the outdoor concentrations.

Assessment of the workers' exposure during CNT handling did not show an increase in the concentrations measured with the P-Trak particle counters. This is probably explained by the fact that the CNTs used appear in the form of large agglomerates (>100 micrometres), which are far above the P-Trak upper detection limit (1 micrometre). It is then possible that high levels of larger particles can be measured by mass methods. Mass measurements are also proposed by the NIOSH to assess carbon nanotubes and nanofibre exposures, based on the measurement method for diesel particulate matter (NIOSH Method 5040) [125]. However, no equivalent method exists at the IRSST, although a synthesis document on the Diesel Emissions Evaluation Program (DEEP) was published in 2001 on the subject [142].

Levels exceeding 200,000 particles/cm<sup>3</sup> of air were measured during extruder startup (1 metre), with or without nanotubes. Some authors report exposures to complex mixes of vapours and fumes during different processes in the plastics processing industry [143-145]. In particular, they found short-chain hydrocarbons (C2-C6), long-chain hydrocarbons (C9-C11) and aromatic and cyclic hydrocarbons [144]. Forrest et al. [143] also indicate that extrusion processes generate large quantities of fumes, in comparison with injection moulding processes. However, to our knowledge, no specific study exists on the UFP exposures of this sector's workers. The preliminary data presented in this report thus constitutes new information.

## 6.4 University Laboratories Producing or Using Nanoparticles

### 6.4.1 Laboratory A

The levels measured in this laboratory are low and well below the levels reported in other nanoparticle synthesis processes, which can reach concentrations of 106,000 particles/cm<sup>3</sup> [64]. The process studied is a closed process and milling is performed in liquid nitrogen, which greatly limits the powdering and explains why the particle levels are relatively stable and similar at the two sampling stations. However, slight increases are noted in the particle concentrations during experimentation for all the sampled tasks. In addition, the concentrations measured in the gaseous phase of nitrogen show that particles exit the liquid phase, drawn by the flow of gas towards the floor. Maynard et al. had also proposed that certain nanoparticles (CNT) could be drawn by air movements [146]. Finally, during dismantling of the mill, concentration differences appear between the zone near the mill and the zone farther away. The most noticeable difference was recorded on the third day, when the particles were nanoscale. These results indicate the possibility of NP exposure during specific opening and NP collection stages in the mill and during the dismantling and cleaning stage. This process requires in-depth assessment, but it appears at this stage that specific means of prevention should be put in place.

### 6.4.2 Laboratory B

Assessment of the concentrations during CNT handling in the glove box did not show an increase in the particle number concentrations in the laboratory at the two sampled stations. Although this data does not allow a conclusion on the potential particle generation in the glove box's air, it shows that no particles are generated outside it. These conclusions are valid for particles within the P-Trak detection range from 20 nm to 1,000 nm.

### **6.4.3 Laboratory C**

Assessment of the concentrations during CNT handling, whether in the glove box or under the laboratory hood, did not show an increase in particle number concentrations. This is probably explained by the fact that the CNTs use appear in the form of large agglomerates (>100 micrometres), which are far above the P-Trak detection limit (<1 micrometre). These results also go in the same direction as other measurements taken in the laboratory during CNT handling [146, 147]. Furthermore, Maynard et al. indicated that mere handling of CNT powders did not generate enough energy to overcome the van der Waals forces present in these particles [146]. However, the authors also indicated that uncertainties remained for more energetic processes that could generate high NP concentrations.

Although the concentrations measured are low, two peak aerosol mass concentrations were measured during nanotube handling in the glove box with the DustTrak. These results suggest that larger particles, with a diameter >1,000 nm, corresponding to the P-Trak detection limit, could be airborne momentarily. These results necessitate in-depth assessments in order to confirm the effectiveness of mass measurements in assessing CNT exposure, but it appears that the prevention method in place in this laboratory, CNT isolation in a glove box, is suitable.



## 7. GENERAL CONSIDERATIONS AND RECOMMENDATIONS

The NM concentration assessments performed in this project on real occupational exposure cases are the first published by the IRSST. The results presented in this report will make it possible to complete certain data on occupational NM exposure and to specify the tools for assessing exposure to these products based on certain “field” parameters.

### 7.1 Occupational Exposures

Aluminium smelter workers, persons who perform welding tasks and thermoplastic processing industry workers are exposed to high UFP concentrations. Since several authors recognize UFPs as possible causes of respiratory and cardiovascular problems [11-16], it is important to continue assessing the nature of UFP exposure and the UFP exposure levels of the groups of workers at risk. This data is essential to the success of the epidemiological surveys on the health effects of these contaminants.

The assessments performed within the context of this report do not show high NP concentrations in the research laboratories. Only the milling process generated detectable NP concentrations. CNT handling in the glove boxes of the other two laboratories seems to prevent occupational exposure adequately. In Laboratory C, peak particle concentrations were measured during polymer polishing. Characterization studies could allow identification of the nature of these particles and their agglomeration state.

### 7.2 Exposure Assessment Tools

There is currently no consensus concerning UFP and NP exposure assessment measurements. However, this study showed that the P-Trak was suitable for assessment of UFP concentrations. In a comparative field study, Zhu et al. [148] also showed that the P-Trak is an effective instrument to compare UFP exposures in relation to other more perfected but non-portable instruments. However, the authors indicate that special attention must be paid to measurements near combustion sources. Park et al. state that the P-Trak could overestimate certain exposures to high concentrations by a factor of 3 [86]. This device’s quick response time also let us show the peak exposures during welding operations. Finally, all the “field” studies that seek to assess UFP exposures should integrate a granulometric aerosol distribution assessment to confirm the presence of UFPs. The P-Trak’s detection limits let it measure fine and ultrafine particles simultaneously.

The assessments performed during CNT handling did not show an increase in the particle concentrations measured with the P-Trak devices, whether during handling of powders in an open environment (thermoplastic), in a university laboratory (Laboratory B) or even in a glove box (Laboratory C). Bello et al. [147] also showed that in a chemical vapour deposition (CVD) laboratory, no detectable quantity of NPs is generated in the laboratory. The measurements had been performed with CPCs and an FMPS. Tsai et al. also indicate that the particle number concentrations measured during different nanopowder handling activities were close to the background noise levels [69]. These results do not indicate that the workers are unlikely to be

exposed to NPs, but that the P-Trak cannot measure these particles. In Laboratory C, when a DustTrak had been placed in the glove box, peaks had been recorded in relation to the CNT handling operations. The CNTs used in the thermoplastic processing plant and in Laboratory C were the same, Baytubes® Carbon Nanotubes (C150HP) made by Bayer MaterialScience (BMS) [135]. These nanotubes have agglomerated sizes over 100 micrometres, giving them limited inhalation exposure potential, according to the company [136]. Our results indicate that measurement with the P-Trak particle counters then is inappropriate for these raw powder handling stages. However, it remains possible that high agglomerated particle levels can be measured by other sampling methods. Mass measurements are proposed by the NIOSH to assess exposures to carbon nanotubes and nanofibres [125]. Tsai et al. also conclude from their study that mass measurement of respirable dusts is necessary for assessment of occupational NP exposure [69]. Finally, the results presented confirm that mass assessments should be considered when handling nanopowders.

In view of this research, it appears that a characterization and control study of occupational NP and UFP exposure should include an assessment of the mass and particle number concentrations, a measurement of the granulometric distribution and an electron microscopic characterization of the nanosized particles [149].

The conclusions and recommendations presented in this report are only one aspect of assessment of the human health risks posed by UFPs and NPs. The toxicity aspect, but also the scientific uncertainty, should be considered when pronouncing on the risk and the means of prevention to be deployed.



## 8. BIBLIOGRAPHY

1. Ostiguy, C., B. Roberge, L. Ménard, et C.-A. Endo, "Guide de bonnes pratiques favorisant la gestion des risques reliés aux nanoparticules de synthèse". Vol. R-596. 2008, Montréal: Études et recherches, Guide technique R-586, Institut de recherche Robert-Sauvé en santé et en sécurité du travail. 63.
2. Afsset, "Évaluation des risques liés aux nanomatériaux pour la population générale et pour l'environnement". Agence Française de Sécurité Sanitaire de l'Environnement et du Travail. Rapport d'expertise collectif, Comité d'experts spécialisés « Agents physiques, nouvelles technologies et grands aménagements », Groupe de Travail « Nanomatériaux - exposition du consommateur et de l'environnement ». Saisine n°2008/005. 2008.
3. Schmid, K., B. Danuser, et M. Riediker, "Nanoparticle Usage and Protection Measures in the Manufacturing Industry-A Representative Survey". *Journal of Occupational and Environmental Hygiene*, 2010. 7(4), p. 224-232.
4. Lee, J., S. Mahendra, et P.J.J. Alvarez, "Nanomaterials in the Construction Industry: A Review of Their Applications and Environmental Health and Safety Considerations". *Acc Nano*, 2010. 4(7), p. 3580-3590.
5. NanoQuébec. "Les nanos au Québec". 2011; Disponible à : <http://www.nanoquebec.ca/fr/les-nanos-au-quebec.php>, 2011/03/04.
6. Youtie, J., A. Porter, P. Shapira, T. L., et T. Benn, "The use of environmental, health and safety research in nanotechnology research". *Journal of nanoscience and nanotechnology*, 2011. 11(1), p. 158-166.
7. NIOSH. "NANOTECHNOLOGY, 10 Critical Topic Areas, National Institute Of Occupational Safety & Health". 2011; Disponible à : <http://www.cdc.gov/niosh/topics/nanotech/critical.html>, 2011/03/04.
8. Aitken, R.J., K.S. Creely, et C.L. Tran, "Nanoparticles: an occupational hygiene review". Research report 274. 2004, Edinburg, UK: Institute of Occupational Medicine, Research report 274, HSE Books. 102.
9. Schneider, T., A. Jansson, K.A. Jensen, V. Kristjansson, V. Luotamo, O. Nygren, K. Savolainen, V. Skaug, Y. Thomassen, A. Tossavainen, T. Tuomi, et H. Wallin, "Evaluation and control of occupational health risks from nanoparticles". 2007, Copenhagen: TemaNord 2007:581, Nordic Council of Ministers. 96.
10. Kaluza, S., J.K. Balderhaar, B. Orthen, B. Honnert, E. Jankowska, P. Pietrowski, M.G. Rosell, C. Tanarro, J. Tejedor, et A. Zugasti, "Workplace exposure to nanoparticles", ed. J. Kosk-Bienko. 2009, Bilbao, Spain: European Agency for Safety and Health at Work (EU-OSHA). 89.
11. Donaldson, K., V. Stone, P. Gilmour, D. Brown, et W. MacNee, "Ultrafine particles: Mechanism of lung injury". *Phil Trans R Soc Lond A*, 2000. 358, p. 2741-2749.
12. Oberdorster, G., E. Oberdorster, et J. Oberdorster, "Nanotoxicology: an emerging discipline evolving from studies of ultrafine particles". *Environ Health Perspect*, 2005. 113(7), p. 823-39.
13. Oesterling, E., N. Chopra, V. Gavalas, X. Arzuaga, E.J. Lim, R. Sultana, D.A. Butterfield, L. Bachas, et B. Hennig, "Alumina nanoparticles induce expression of endothelial cell adhesion molecules". *Toxicol Lett*, 2008. 178(3), p. 160-6.

14. Sioutas, C., R. Delfino, et M. Singh, "Potential role of ultrafine particles in associations between airborne particle mass and cardiovascular health". *Environ Health Perspect*, 2005. 113, p. 934-46.
15. Warheit, D.B., C.M. Sayes, K.L. Reed, et K.A. Swain, "Health effects related to nanoparticle exposures: environmental, health and safety considerations for assessing hazards and risks". *Pharmacol Ther*, 2008. 120(1), p. 35-42.
16. Wittmaack, K., "In search of the most relevant parameters for quantifying lung inflammatory response to nanoparticle exposure: Particle number, surface area or what?". *Environ Health Perspect*, 2007. 114, p. 187-194.
17. Elihn, K. et P. Berg, "Ultrafine Particle Characteristics in Seven Industrial Plants". *Annals of Occupational Hygiene*, 2009. 53(5), p. 475-484.
18. Evans, D.E., W.A. Heitbrink, T.J. Slavin, et T.M. Peters, "Ultrafine and Respirable Particles in an Automotive Grey Iron Foundry". *Annals of Occupational Hygiene*, 2008. 52(1), p. 9-21.
19. Thomassen, Y., W. Koch, W. Dunkhorst, D.G. Ellingsen, N.-P. Skaugset, L. Jordbekken, P.A. Drabløs, et S. Weinbruch, "Ultrafine particles at workplaces of a primary aluminium smelter". *Journal of Environmental Monitoring*, 2006. 8(1), p. 127-133.
20. Cunningham, E., W. Jablonski, et J. Todd, "Electron Microscopy Studies of Silica Fume Emissions From a Silicon Smelter in Southern Tasmania, Australia". *Am Ind Hyg Assoc J*, 1996. 57, p. 1024-1034.
21. Brouwer, D.H., J.H.J. Gijsbers, et M.W.M. Lurvink, "Personal Exposure to Ultrafine Particles in the Workplace: Exploring Sampling Techniques and Strategies". *Annals of Occupational Hygiene*, 2004. 48(5), p. 439-453.
22. Hewett, P., "The Particle Size Distribution, Density, and Specific Surface Area of Welding Fumes from SMAW and GMAW Mild and Stainless Steel Consumables". *American Industrial Hygiene Association Journal*, 1995. 56(2), p. 128-135.
23. Hovde, C.A. et P.C. Raynor, "Effects of Voltage and Wire Feed Speed on Weld Fume Characteristics". *Journal of Occupational and Environmental Hygiene*, 2007. 4(12), p. 903-912.
24. Zimmer, A.T., P.A. Baron, et P. Biswas, "The influence of operating parameters on number-weighted aerosol size distribution generated from a gas metal arc welding process". *Journal of Aerosol Science*, 2002. 33(3), p. 519-531.
25. Zimmer, A.T. et A.D. Maynard, "Investigation of the Aerosols Produced by a High-speed, Hand-held Grinder Using Various Substrates". *Annals of Occupational Hygiene*, 2002. 46(8), p. 663-672.
26. Handy, R.G., M.J. Jackson, G.M. Robinson, et M.D. Lafreniere, "The Measurement of Ultrafine Particles: A Pilot Study Using a Portable Particle Counting Technique to Measure Generated Particles During a Micromachining Process". *Journal of Materials Engineering and Performance*, 2006. 15(2), p. 172-177.
27. Baxter, C.S., C.S. Ross, T. Fabian, J.L. Borgerson, J. Shawon, P.D. Gandhi, J.M. Dalton, et J.E. Lockey, "Ultrafine Particle Exposure During Fire Suppression-Is It an Important Contributory Factor for Coronary Heart Disease in Firefighters?". *Journal of Occupational and Environmental Medicine*, 2010. 52(8), p. 791-796.
28. Weichenthal, S., A. Dufresne, et C. Infante-Rivard, "Indoor ultrafine particles and childhood asthma: exploring a potential public health concern". *Indoor Air*, 2007. 17(2), p. 81-91.

29. Ostiguy, C., B. Soucy, G. Lapointe, C. Woods, L. Ménard, et M. Trottier, "Les effets sur la santé reliés aux nanoparticules". 2e Édition ed. Vol. R-558. 2008, Montréal: Études et recherches, Rapport R-558, Institut de recherche Robert-Sauvé en santé et en sécurité du travail.
30. Wang, J., W.G. Shin, M. Mertler, B. Sachweh, H. Fissan, et D.Y.H. Pui, "Measurement of Nanoparticle Agglomerates by Combined Measurement of Electrical Mobility and Unipolar Charging Properties". *Aerosol Science and Technology*, 2010. 44, p. 97-108.
31. Wang, J., C. Asbach, H. Fissan, T. Hülser, T.A.J. Kuhlbusch, D. Thompson, et D.Y.H. Pui, "How can nanobiotechnology oversight advance science and industry: examples from environmental, health, and safety studies of nanoparticles (nano-EHS)". *Journal of Nanoparticle Research*, 2011. 13(4), p. 1373-1387.
32. Yli-Ojanperä, J., J. Kannosto, M. Marjamäki, et J. Keskinen, "Improving the Nanoparticle Resolution of the ELPI". *Aerosol and Air Quality Research*, 2010. 10, p. 360-366.
33. Lee, S.-B., J.-H. Lee, et G.-N. Bae, "Size response of an SMPS-APS system to commercial multi-walled carbon nanotubes". *Journal of Nanoparticle Research*, 2010. 12(2), p. 501-512.
34. Schmoll, L.H., T.M. Peters, et P.T. O'Shaughnessy, "Use of a Condensation Particle Counter and an Optical Particle Counter to Assess the Number Concentration of Engineered Nanoparticles". *Journal of Occupational and Environmental Hygiene*, 2010. 7(9), p. 535-545.
35. Pelzer, J., O. Bischof, W. van den Brink, M. Fierz, H. Gnewuch, H. Isherwood, M. Kasper, A. Knecht, T. Krinke, et A. Zerrath, "Geräte zur Messung der Anzahlkonzentration von Nanopartikeln: Aktueller Überblick über die Messtechnik". *Gefahrstoffe Reinhaltung der Luft*, 2010. 70(11/12), p. 469-477.
36. Justino, C.I.L., T.A. Rocha-Santos, et A.C. Duarte, "Sampling and characterization of nanoaerosols in different environments". *TrAC Trends in Analytical Chemistry*, 2011. 30(3), p. 554-567.
37. Kuhlbusch, T.A.J., C. Asbach, H. Fissan, D. Gohler, et M. Stintz, "Nanoparticle exposure at nanotechnology workplaces: A review.". *Particle and Fibre Toxicology*, 2011. 8(22), p. 1-18.
38. Nash, D.G. et D. Leith, "Ultrafine Particle Sampling with the UNC Passive Aerosol Sampler". *Aerosol Science and Technology*, 2010. 44(12), p. 1059-1064.
39. Marra, J., M. Voetz, et H.-J. Kiesling, "Monitor for detecting and assessing exposure to airborne nanoparticles". *Journal of Nanoparticle Research*, 2010. 12(1), p. 21-37.
40. Khan, A.H., A. Mishra, P. Pandey, A. Singh, et G.C. Kisku, "Measurement Techniques and Instruments for Airborne Nanoparticles". *Journal of Biomedical Nanotechnology*, 2011. 7(1), p. 165.
41. Fierz, M., C. Houle, P. Steigmeier, et H. Burtscher, "Design, Calibration, and Field Performance of a Miniature Diffusion Size Classifier". *Aerosol Science and Technology*, 2011. 45(1), p. 1-10.
42. Fierz, M., A. Keller, et H. Burtscher, "Charge-based personal aerosol samplers". *Inhalation Toxicology*, 2009. 21(s1), p. 30-34.
43. Thayer, D., K.A. Koehler, A. Marchese, et J. Volckens, "A Personal, Thermophoretic Sampler for Airborne Nanoparticles". *Aerosol Science and Technology*, 2011. 45(6), p. 734-740.

44. Gjonnes, K., A. Skogstad, S. Hetland, D.G. Ellingsen, Y. Thomassen, et S. Weinbruch, "Characterization of workplace aerosols in the manganese alloy production industry by electron microscopy". *Analytical and Bioanalytical Chemistry*, 2011. 399(3), p. 1011-1020.
45. Sielicki, P., H. Janik, A. Guzman, M. Broniszewski, et J. Namiesnik, "Oil refinery dusts: morphological and size analysis by TEM". *Analytical and Bioanalytical Chemistry*, 2011. 399, p. 3261-3270.
46. Moroni, B. et C. Viti, "Grain size, chemistry, and structure of fine and ultrafine particles in stainless steel welding fumes". *Aerosol Science*, 2009. 40, p. 938-949.
47. Göhler, D., M. Stintz, L. Hillemann, et M. Vorbau, "Characterization of Nanoparticle Release from Surface Coatings by the Simulation of a Sanding Process". *Annals of Occupational Hygiene*, 2010. 54(6), p. 615-624.
48. Vorbau, M., L. Hillemann, et M. Stintz, "Method for the characterization of the abrasion induced nanoparticle release into air from surface coatings". *Journal of Aerosol Science*, 2009. 40(3), p. 209-217.
49. Dewalle, P., J. Vendel, J.-M. Weulersse, P. Hervé, et G. Decobert, "Characterization of Aerosols Generated by Nanosecond Laser Ablation of an Acrylic Paint". *Aerosol Science and Technology*, 2010. 44, p. 902-915.
50. Sivapirakasam, S.P., J. Mathew, et M. Surianarayanan, "Constituent analysis of aerosol generated from die sinking electrical discharge machining process". *Process Safety & Environmental Protection*, 2011. 82(2), p. 141-150.
51. Myojo, T., T. Oyabu, K. Nishi, C. Kadoya, I. Tanaka, M. Ono-Ogasawara, H. Sakae, et T. Shirai, "Aerosol generation and measurement of multi-wall carbon nanotubes". *Journal of Nanoparticle Research*, 2009. 11(1), p. 91-99.
52. Ogura, I., H. Sakurai, K. Mizuno, et M. Gamo, "Release potential of single-wall carbon nanotubes produced by super-growth method during manufacturing and handling". *Journal of Nanoparticle Research*, 2011. 13(3), p. 1265-1280.
53. Tsai, S.-J., M. Hofmann, M. Hallock, E. Ada, J. Kong, et M.J. Ellenbecker, "Characterization and Evaluation of Nanoparticle Release during the Synthesis of Single-Walled and multiwalled Carbon Nanotubes by Chemical Vapor Deposition". *Environmental Science & Technology*, 2009. 43(15), p. 6017-6023.
54. R'mili, B., C. Dutouquet, J.B. Sirven, O. Aguerre-Chariol, et E. Frejafon, "Analysis of particle release using LIBS (laser-induced breakdown spectroscopy) and TEM (transmission electron microscopy) samplers when handling CNT (carbon nanotube) powders". *Journal of Nanoparticle Research*, 2011. 13 (2), p. 563-577.
55. Tsai, C.-J., C.-H. Wu, M.-L. Leu, S.-C. Chen, C.-Y. Huang, P.-J. Tsai, et F.-H. Ko, "Dustiness test of nanopowders using a standard rotating drum with a modified sampling train". *Journal of Nanoparticle Research*, 2009. 11(1), p. 121-131.
56. Schneider, T. et K.A. Jensen, "Relevance of aerosol dynamics and dustiness for personal exposure to manufactured nanoparticles". *Journal of Nanoparticle Research*, 2009. 11(7), p. 1637-1650.
57. Capanelli, G., E. Castello, A. Comite, C. Costa, et G. Mamolini, "Electron microscopy characterization of airborne micro- and nanoparticulate matter". *Journal of Electron Microscopy*, 2011. 60(2), p. 117-131.

58. Hämeri, K., T. Lähde, T. Hussein, J. Koivisto, et K. Savolainen, "Facing the key workplace challenge: Assessing and preventing exposure to nanoparticles at source". *Inhalation Toxicology*, 2009. 21(SUPPL. 1), p. 17-24.
59. Brouwer, D., "Exposure to manufactured nanoparticles in different workplaces". *Toxicology*, 2010. 269(2-3), p. 120-127.
60. Lee, J.H., S.-B. Lee, G.N. Bae, K.S. Jeon, J.U. Yoon, J.H. Ji, J.H. Sung, B.G. Lee, J.H. Lee, J.S. Yang, H.Y. Kim, C.S. Kang, et I.J. Yu, "Exposure assessment of carbon nanotube manufacturing workplaces". *Inhalation Toxicology*, 2010. 22(5), p. 369-381.
61. Takaya, M., F. Serita, M. Ono-Ogasawara, Y. Shinohara, H. Saito, et S. Koda, "Airborne Particles in a Multi-wall Carbon Nanotube Production Plant: Observation of Particle Emission and Personal Exposure 1: Measurement in the Packing Process]". *Sangyo Eiseigaku Zasshi*, 2010. 52(4), p. 182-8.
62. Cena, L.G. et T.M. Peters, "Characterization and Control of Airborne Particles Emitted During Production of Epoxy/Carbon Nanotube Nanocomposites". *Journal of Occupational and Environmental Hygiene*, 2011. 8(2), p. 86-92.
63. Bello, D., B.L. Wardle, J. Zhang, N. Yamamoto, C. Santeufemio, M. Hallock, et M.A. Virji, "Characterization of Exposures to Nanoscale Particles and Fibers During Solid Core Drilling of Hybrid Carbon Nanotube advanced composites". *International Journal of Occupational & Environmental Health*, 2010. 16(4), p. 434-50.
64. Demou, E., L. Tran, et C. Housiadas, "Effective biological dose from occupational exposure during nanoparticle synthesis". *Journal of Physics: Conference Series*, 2009. 151(1/012016), p. 1-5.
65. Plitzko, S., "Workplace exposure to engineered nanoparticles". *Inhalation Toxicology*, 2009. 21(S1), p. 25-29.
66. Huang, C.-H., C.-Y. Tai, C.-Y. Huang, C.-J. Tsai, C.-W. Chen, C.-P. Chang, et T.-S. Shih, "Measurements of respirable dust and nanoparticle concentrations in a titanium dioxide pigment production factory". *Journal of Environmental Science & Health Part A-Toxic/Hazardous Substances & Environmental Engineering*, 2010. 45(10), p. 1227-1233.
67. Methner, M.M., "Effectiveness of a Custom-fitted Flange and Local Exhaust Ventilation (LEV) System in Controlling the Release of Nanoscale Metal Oxide Particulates During Reactor Cleanout Operations". *International Journal of Occupational & Environmental Health*, 2010. 16(4), p. 475-487.
68. van Broekhuizen, P., F. van Broekhuizen, R. Cornelissen, et L. Reijnders, "Use of nanomaterials in the European construction industry and some occupational health aspects thereof". *Journal of Nanoparticle Research*, 2011. 13 (2), p. 447-462.
69. Tsai, C.J., C.Y. Huang, S.C. Chen, C.E. Ho, C.H. Huang, C.W. Chen, C.P. Chang, S.J. Tsai, et M.J. Ellenbecker, "Exposure assessment of nano-sized and respirable particles at different workplaces". *J Nanopart Res*, 2011. 13, p. 4161-4172.
70. Curwin, B. et S. Bertke, "Exposure Characterization of Metal Oxide nanoparticles in the Workplace". *Journal of Occupational & Environmental Hygiene*, 2011. 8(10), p. 580-587.
71. Tsai, S.-J., R.F. Huang, et M.J. Ellenbecker, "Airborne Nanoparticle Exposures while Using Constant-Flow, Constant-Velocity, and Air-Curtain-Isolated Fume Hoods". *Annals of Occupational Hygiene*, 2010. 54(1), p. 78-87.
72. Vartiainen, J., T. Pohler, K. Sirola, L. Pylkkanen, H. Alenius, J. Hokkinen, U. Tapper, P. Lahtinen, A. Kapanen, K. Putkisto, P. Hiekkataipale, P. Eronen, J. Ruokolainen, et A.

- Laukkanen, "Health and environmental safety aspects of friction grinding and spray drying of microfibrillated cellulose". *Cellulose*, 2011. 18(3), p. 775-786.
73. Jankovic, J.T., S.M. Hollenbeck, et T.L. Zontek, "Ambient Air Sampling During Quantum-Dot Spray Deposition". *International Journal of Occupational & Environmental Health*, 2010. 16(4), p. 388-398.
  74. Heitbrink, W.A., D.E. Evans, B.K. Ku, A.D. Maynard, T.J. Slavin, et T.M. Peters, "Relationships Among Particle Number, Surface Area, and Respirable Mass Concentrations in Automotive Engine Manufacturing". *Journal of Occupational and Environmental Hygiene*, 2009. 6(1), p. 19-31.
  75. Zaghbani, I., V. Songmene, et R. Khettabi, "Fine and Ultrafine Particle Characterization and Modeling in High-Speed Milling of 6061-T6 Aluminum Alloy". *Journal of Materials Engineering and Performance*, 2009. 18(1), p. 38-48.
  76. Khettabi, R., V. Songmene, et J. Masounave, "Effects of Speeds, Materials, and Tool Rake Angles on Metallic Particle Emission During Orthogonal Cutting". *Journal of Materials Engineering and Performance*, 2010. 19(6), p. 767-775.
  77. Cheng, Y.-H., Y.-C. Chao, C.-H. Wu, C.-J. Tsai, S.-N. Uang, et T.-S. Shih, "Measurements of ultrafine particle concentrations and size distribution in an iron foundry ". *Journal of Hazardous Materials*, 2008. 158(1), p. 124-130.
  78. Miller, A., P.L. Drake, P. Hintz, et M. Habjan, "Characterizing Exposures to Airborne Metals and Nanoparticle Emissions in a Refinery". *Annals of Occupational Hygiene*, 2010. 54(5), p. 504-513.
  79. Bemer, D., R. Régnier, I. Subra, B. Sutter, M.T. Lecler, et Y. Morele, "Ultrafine Particles Emitted by Flame and Electric Arc Guns for Thermal Spraying of Metals". *Annals of Occupational Hygiene*, 2010. 54(6), p. 607-614.
  80. Zhu, Y.F., A. Eiguren-Fernandez, W.C. Hinds, et A.H. Miguel, "In-Cabin Commuter Exposure to Ultrafine Particles on Los Angeles Freeways". *Environmental Science & Technology*, 2007. 41(7), p. 2138-2145.
  81. Knibbs, L.D., R.J. De Dear, et L. Morawska, "Effect of Cabin Ventilation Rate on Ultrafine Particle Exposure Inside Automobiles". *Environmental Science & Technology*, 2010. 44(9), p. 3546-3551.
  82. Hammond, D., S. Jones, et M. Lalor, "In-vehicle Measurement of Ultrafine Particles on Compressed Natural Gas, Conventional Diesel, and Oxidation-catalyst Diesel Heavy-duty Transit Buses". *Environmental Monitoring and Assessment*, 2007. 125(1-3), p. 239-246.
  83. Liu, L.-J.S., H.C. Phuleria, W. Webber, M. Davey, D.R. Lawson, R.G. Ireson, B. Zielinska, J. Ondov, C.S. Weaver, C.A. Lapin, M. Easter, T.W. Hesterberg, et T. Larson, "Quantification of self pollution from two diesel school buses using three independent methods". *Atmospheric Environment*, 2010. 44, p. 3422-3431.
  84. Zhang, Q. et Y. Zhu, "Measurements of ultrafine particles and other vehicular pollutants inside school buses in South Texas". *Atmospheric Environment*, 2010. 44, p. 253-261.
  85. Ramachandran, G., D. Paulsen, W. Watts, et D. Kittelson, "Mass, surface area and number metrics in diesel occupational exposure assessment". *Journal of Environmental Monitoring*, 2005. 7(7), p. 728-735.
  86. Park, J.Y., G. Ramachandran, P.C. Raynor, L.E. Eberly, et G. Olson Jr, "Comparing Exposure Zones by Different Exposure Metrics Using Statistical Parameters: Contrast and Precision". *Annals of Occupational Hygiene*, 2010. 54(7), p. 799-812.

87. Park, J.Y., G. Ramachandran, P.C. Raynor, et G.M. Olson Jr, "Determination of Particle Concentration Rankings by Spatial Mapping of Particle Surface Area, Number, and Mass Concentrations in a Restaurant and a Die Casting Plant". *Journal of Occupational and Environmental Hygiene*, 2010. 7(8), p. 466-476.
88. Yeganeh, B., C.M. Kull, M.S. Hull, et L.C. Marr, "Characterization of Airborne Particles During Production of Carbonaceous Nanomaterials". *Environmental Science & Technology*, 2008. 42(12), p. 4600-4606.
89. Elihn, K., B. Ulvestad, S. Hetland, A. Wallen, et B.G. Randem, "Exposure to Ultrafine Particles in Asphalt Work". *Journal of Occupational & Environmental Hygiene*, 2008. 5(12), p. 771-779.
90. Vosburgh, D.J.H., D.A. Boysen, J.J. Oleson, et T.M. Peters, "Airborne Nanoparticle Concentrations in the Manufacturing of Polytetrafluoroethylene (PTFE) Apparel.". *Journal of Occupational and Environmental Hygiene*, 2011. 8(3), p. 139-146.
91. Szymczak, W., N. Menzel, et L. Keck, "Emission of ultrafine copper particles by universal motors controlled by phase angle modulation". *Journal of Aerosol Science*, 2007. 38(5), p. 520-531.
92. Cheng, Y.-H., C.-H. Huang, H.-L. Huang, et C.-J. Tsai, "Concentrations of ultrafine particles at a highway toll collection booth and exposure implications for toll collectors". *Science of the Total Environment*, 2010. 409(2), p. 364-369.
93. Wang, Y., P.K. Hopke, D.C. Chalupa, et M.J. Utell, "Long-Term Characterization of Indoor and Outdoor Ultrafine Particles at a Commercial Building". *Environmental Science & Technology*, 2010. 44, p. 5775-5780.
94. Lee, C.-W. et D.-J. Hsu, "Measurements of fine and ultrafine particles formation in photocopy centers in Taiwan". *Atmospheric Environment*, 2007. 41(31), p. 6598-6609.
95. Gylseth, B., O. Bjørseth, ø. Dugstad, et J. Gjønnes, " Occurrence of fibrous sodium aluminumtetrafluoride particles in potrooms of the primary aluminum industry". *Scand J Work Environ Health*, 1984. 10 p. 189-195.
96. Weichenthal, S., A. Dufresne, C. Infante-Rivard, et L. Joseph, "Characterizing and predicting ultrafine particle counts in Canadian classrooms during the winter months: Model development and evaluation". *Environmental Research*, 2008. 106(3), p. 349-360.
97. Morawska, L., C. He, G. Johnson, H. Guo, E. Uhde, et G. Ayoko, "Ultrafine Particles in Indoor Air of a School: Possible Role of Secondary Organic Aerosols". *Environmental Science & Technology*, 2009. 43(24), p. 9103-9109.
98. Mullen, N.A., S. Bhangar, S.V. Hering, N.M. Kreisberg, et W.W. Nazaroff, "Ultrafine particle concentrations and exposures in six elementary school classrooms in northern California". *Indoor Air*, 2011. 21, p. 77-87.
99. Isaxon, C., J. Pagels, A. Gudmundsson, C. Asbach, A.C. John, T.A.J. Kuhlbusch, J.E. Karlsson, R. Kammer, H. Tinnerberg, J. Nielsen, et M. Bohgard, "Characteristics of Welding Fume Aerosol Investigated in Three Swedish Workshops". *Journal of Physics: Conference Series*, 2009. 151(1/012059), p. 1-5.
100. Pfefferkorn, F.E., D. Bello, G. Haddad, J.-Y. Park, M. Powell, J. McCarthy, K.L. Bunker, A. Fehrenbacher, Y. Jeon, M.A. Virji, G. Gruetzmacher, et M.D. Hoover, "Characterization of Exposures to Airborne Nanoscale Particles During Friction Stir Welding of Aluminum". *Annals of Occupational Hygiene*, 2010. 54(5), p. 486-503.
101. Buonanno, G., L. Morawska, et L. Stabile, "Exposure to welding particles in automotive plants". *Journal of Aerosol Science*, 2011. 42(5), p. 295-304.

102. Liu, S. et S.K. Hammond, "Mapping Particulate Matter at the Body Weld Department in an Automobile Assembly Plant". *Journal of Occupational and Environmental Hygiene*, 2010. 7(10), p. 593-604.
103. Tsai, S.J., E. Ada, J.A. Isaacs, et M.J. Ellenbecker, "Airborne nanoparticle exposures associated with the manual handling of nanoalumina and nanosilver in fume hoods". *Journal of Nanoparticle Research*, 2009. 11(1), p. 147-161.
104. Shaffer, R.E. et S. Rengasamy, "Respiratory protection against airborne nanoparticles: a review". *Journal of Nanoparticle Research*, 2009. 11(7), p. 1661-1672.
105. Mostofi, R., B. Wang, F. Haghighat, A. Bahloul, et J. Lara, "Performance of Mechanical Filters and Respirators for Capturing nanoparticles - Limitations and Future Direction". *Industrial Health*, 2010. 48(3), p. 296-304.
106. Dolez, P.I., N. Bodila, J. Lara, et G. Truchon, "Personal protective equipment against nanoparticles". *International Journal of Nanotechnology*, 2010. 7(1), p. 99-117.
107. Rengasamy, S. et B.C. Eimer, "Total Inward Leakage of Nanoparticles Through Filtering Facepiece Respirators". *Annals of Occupational Hygiene*, 2011. 55(3), p. 253-263.
108. Yokel, R.A. et R.C. MacPhail, "Engineered nanomaterials: exposures, hazards, and risk prevention". *Journal of Occupational Medicine and Toxicology*, 2011. 6(7), p. 1-27.
109. Eninger, R.M., T. Honda, T. Reponen, R. McKay, et G. S.A., "What Does Respirator Certification Tell Us About Filtration of Ultrafine Particles?". *Journal of Occupational & Environmental Hygiene*, 2008. 5(5), p. 286-295.
110. Ostiguy, C., B. Roberge, L. Menard, et C. Endo, "A good practice guide for safe work with nanoparticles: The Quebec approach". *Inhaled Particles X, Journal of Physics: Conference Series*, 2009. 151(1/012037), p. 1-5.
111. van der Laan, G., "Tracing New Occupational Diseases in Nano-Workers". *Journal of Biomedical Nanotechnology*, 2011. 7(1), p. 18.
112. Dhawan, A., R. Shanker, D. M., et K.C. Gupta, "Guidance for Safe Handling of Nanomaterials". *Journal of Biomedical Nanotechnology*, 2011. 7(1), p. 218-224.
113. Schulte, P.A., V. Murashov, R. Zumwalde, E.D. Kuempel, et C.L. Geraci, "Occupational exposure limits for nanomaterials: State of the art". *Journal of Nanoparticle Research*, 2010. 12(6), p. 1971-1987.
114. Genaidy, A., R. Sequeira, M. Rinder, et A. A-Rehim, "Risk analysis and protection measures in a carbon nanofiber manufacturing enterprise: An exploratory investigation". *Science of the Total Environment*, 2009. 407(22), p. 5825-5838.
115. Beaudrie, C.I.H. et M. Kandlikar, "Horses for courses: risk information and decision making in the regulation of nanomaterials". *Journal of Nanoparticle Research*, 2011. 13(4), p. 1477-1488.
116. Woskie, S.R., D. Bello, M.A. Virji, et A.B. Stefaniak, "Understanding Workplace Processes and Factors that Influence Exposures to Engineered Nanomaterials". *International Journal of Occupational & Environmental Health*, 2010. 16(4), p. 365-377.
117. van Broekhuizen, P., "Dealing with Uncertainties in the Nanotech Workplace Practice: Making the Precautionary Approach Operational.". *Journal of Biomedical Nanotechnology*, 2011. 7(1), p. 15-17.
118. Stone, D., B.J. Harper, I. Lynch, K. Dawson, et S.L. Harper, "Exposure Assessment: Recommendations for Nanotechnology-Based Pesticides". *International Journal of Occupational & Environmental Health*, 2010. 16(4), p. 467-74.



119. Maynard, A.D., "Commentary: Oversight of engineered nanomaterials in the workplace". *The Journal of Law, Medicine & Ethics*, 2009. 37(4), p. 651-658.
120. Howard, J., "Dynamic oversight: implementation gaps and challenges". *Journal of Nanoparticle Research*, 2011. 13(4), p. 1427-1434.
121. EPA, "Nanoscale materials stewardship program - Interim Report - January 2009". 2009, Washington DC: U.S. Environmental Protection Agency - Office of Pollution Prevention and Toxics. 38.
122. Woskie, S., "Workplace practices for engineered nanomaterial manufacturers". *Wiley Interdisciplinary Reviews. Nanomedicine and Nanobiotechnology*, 2010. 2(6), p. 685-92.
123. Guidotti, T.L., "The Regulation of Occupational Exposure to Nanomaterials: A Proposal". *Archives of Environmental and Occupational Health*, 2010. 65(2), p. 57-58.
124. Pauluhn, J., "Multi-walled carbon nanotubes (Baytubes): Approach for derivation of occupational exposure limit". *Regulatory Toxicology and Pharmacology*, 2010. 57(1), p. 78-89.
125. NIOSH, "Current Intelligence Bulletin (Draft): Occupational Exposure to Carbon Nanotubes and Nanofibers". 2010, Cincinnati, OH: National Institute for Occupational Safety and Health.
126. NIOSH, "Current Intelligence Bulletin 63: Occupational Exposure to TiO<sub>2</sub>". 2011, Cincinnati, OH: National Institute for Occupational Safety and Health.
127. Murashov, V. et J. Howard, "The US must help set international standards for nanotechnology". *Nature Nanotechnology*, 2008. 3(11), p. 635-636.
128. Murashov, V., S. Engel, K. Savolainen, B. Fullam, M. Lee, et P. Kearns, "Occupational safety and health in nanotechnology and Organisation for Economic Cooperation and Development". *Journal of Nanoparticle Research*, 2009. 11(7), p. 1587-1591.
129. ISO, "Air des lieux de travail -- Caractérisation des aérosols ultrafins/nanoaérosols -- Détermination de la distribution granulométrique et de la concentration en nombre à l'aide de systèmes d'analyse différentielle de mobilité électrique. ISO 28439:2011". 2011, Genève: International Organization for Standardization. 15.
130. ISO, "Air des lieux de travail -- Particules ultrafines, nanoparticules et aérosols nanostructurés -- Caractérisation et évaluation de l'exposition par inhalation. ISO/TR 27628:2007". 2007, Genève: International Organization for Standardization. 34.
131. ISO, "Nanotechnologies -- Nanomaterial risk evaluation. ISO/TR 13121:2011". 2011, Genève: International Organization for Standardization.
132. ISO, "Nanotechnologies -- Health and safety practices in occupational settings relevant to nanotechnologies. ISO/TR 12885:2008". 2008, Genève: International Organization for Standardization.
133. ISO, "Nanotechnologies -- Terminology and definitions for nano-objects -- Nanoparticle, nanofibre and nanoplate. ISO/TS 27687:2008". 2008, Genève: International Organization for Standardization.
134. McCann, M., "La transformation et le travail des métaux", in *Encyclopédie de sécurité et de santé au travail*, J.M. Stellman, Editor. 2002, Bureau international du travail: Genève.
135. Bayer MaterialScience LLC, "Material Safety Data Sheet, BAYTUBES C 150 HP, Material Number: 82232770". 2010, Pittsburgh, PA.
136. Bayer MaterialScience, "Baytubes® Carbon Nanotubes, Safe Handling Guidelines". 2009, Pittsburgh, PA.

137. Soward, J.W., J.C. Lippold, D.W. Dickinson, et A.J. Ramirez, "Characterization of Welding Fume from SMAW Electrodes — Part I. Size and mass distributions, fume generation rates, and chemistry are compared for three SMAW electrodes". *Welding research*, 2008. 87, p. 106-112.
138. Schoonover, T., L. Conroy, S. Lacey, et J. Plavka, "Personal Exposure to Metal Fume, NO<sub>2</sub>, and O<sub>3</sub> among Production Welders and Non-welders". *Industrial Health*, 2011. 49, p. 63-72.
139. El-zein, M., J.L. Malo, C. Infante-Rivard, et D. Gautrin, "Incidence of probable occupational asthma and changes in airway calibre and responsiveness in apprentice welders". *Eur Respir J*, 2003. 22, p. 513-518.
140. Höflich, B., S. Weinbruch, R. Theissmann, H. Gorzawski, M. Ebert, H. Ortner, A. Skogstad, D. Ellingsen, P. Drabløs, et Y. Thomassen, "Characterization of individual aerosol particles in workroom air of aluminium smelter potrooms". *J Environ Monit*, 2005. 7(419-424).
141. Voisin, C., F. Fisekci, B. Buclez, A. Didier, B. Couste, F. Bastien, P. Brochard, et J. Pairon, "Mineralogical analysis of the respiratory tract in aluminium oxide-exposed workers". *Eur Respir J*, 1996. 9, p. 1874-1879.
142. Grenier, M., M. Gangal, N. Goyer, S. McGinn, J. Penney, et J. Vergunst, "Mesure de la matière particulaire diesel dans les mines". 2001: Programme minier d'évaluation des émissions de diesels (PMEED).
143. Forrest, M.J., A.M. Jolly, S.R. Holding, et S.J. Richards, "Emissions from processing thermoplastics". *Annals of Occupational Hygiene*, 1995. 39(1), p. 35-53.
144. Meijster, T., I. Burstyn, B. Van Wendel de Joode, M.A. Posthumus, et H. Kromhout, "Evaluating Exposures to Complex Mixtures of Chemicals During a New Production Process in the Plastics Industry". *Annals of Occupational Hygiene*, 2004). . 48(6), p. 499-507.
145. Vainiotalo, S. et P. Pfäffli, "Air impurities in the PVC plastics processing industry". *Annals of Occupational Hygiene*, 1990. 34(6), p. 585-90.
146. Maynard, A.D., P.A. Baron, M. Foley, A.A. Shvedova, E.R. Kisin, et V. Castranova, "Exposure to carbon nanotube material: aerosol release during the handling of unrefined single-walled carbon nanotube material". *Journal of Toxicology and Environmental Health, Part A*, 2004. 67(1), p. 87-107.
147. Bello, D., A.J. Hart, K. Ahn, M. Hallock, N. Yamamoto, E.J. Garcia, M.J. Ellenbecker, et B.L. Wardle, "Particle exposure levels during CVD growth and subsequent handling of vertically-aligned carbon nanotube films". *Carbon*, 2008. 46(6), p. 974-977.
148. Zhu, Y., Y. Yu, T. Kuhn, et W.C. Hinds, "Field Comparison of P-Trak and Condensation Particle Counters". *Aerosol Science and Technology*, 2006. 40(6), p. 422-430.
149. Debia, M., S. Weichenthal, R. Tardif, et A. Dufresne, "Ultrafine Particle (UFP) Exposures in an Aluminium Smelter : Soderberg vs. Prebake Potrooms". *Environment and Pollution*, 2012. 1(1), p. 2-12.